

Pressure Booster System

KSB Delta Basic

KSB Delta Basic MVP
KSB Delta Basic SVP

Type Series Booklet



Legal information/Copyright

Type Series Booklet KSB Delta Basic

All rights reserved. The contents provided herein must neither be distributed, copied, reproduced, edited or processed for any other purpose, nor otherwise transmitted, published or made available to a third party without the manufacturer's express written consent.

Subject to technical modification without prior notice.

© KSB B.V., Alphen aan den Rijn, Nederland 30/11/2020

Contents

Building Services: Water Supply	4
Pressure Booster Systems	4
KSB Delta Basic	4
Main applications	4
Fluids handled	4
Operating data	4
Design details	4
Designation	5
Configuration and function	7
Materials	8
Product benefits	8
Product information	8
Product information as per Regulation No. 1907/2006 (REACH)	8
Certifications	8
Selection information	8
Technical data	9
KSB Delta Basic MVP	9
KSB Delta Basic SVP	11
Characteristic curves	15
KSB Delta Basic MVP, Movitec 02, n = 2900 rpm	15
KSB Delta Basic MVP, Movitec 04, n = 2900 rpm	16
KSB Delta Basic MVP, Movitec 06, n = 2900 rpm	17
KSB Delta Basic MVP, Movitec 10, n = 2900 rpm	18
KSB Delta Basic MVP, Movitec 15, n = 2900 rpm	19
KSB Delta Basic SVP, Movitec 02, n = 2900 rpm	20
KSB Delta Basic SVP, Movitec 04, n = 2900 rpm	21
KSB Delta Basic SVP, Movitec 06, n = 2900 rpm	22
KSB Delta Basic SVP, Movitec 10, n = 2900 rpm	23
KSB Delta Basic SVP, Movitec 15, n = 2900 rpm	24
Dimensions and connections	25
KSB Delta Basic MVP 2, Movitec 02 / 04 / 06 / 10 / 15	25
KSB Delta Basic MVP 3, Movitec 02 / 04 / 06 / 10 / 15	27
KSB Delta Basic SVP 2, Movitec 02 / 04 / 06 / 10 / 15	29
KSB Delta Basic SVP 3, Movitec 02 / 04 / 06 / 10 / 15	31
KSB Delta Basic SVP 4, Movitec 02 / 04 / 06	33
KSB Delta Basic SVP 4, Movitec 10 / 15	35
General assembly drawings/exploded views with list of components	36
KSB Delta Basic MVP	36
KSB Delta Basic SVP	37
Accessories	37

Building Services: Water Supply

Pressure Booster Systems

KSB Delta Basic



KSB Delta Basic SVP

KSB Delta Basic MVP

Main applications

- Pressure boosting

Fluids handled

- Drinking water
- Service water
- Cooling water
- Fluids not chemically or mechanically aggressive to the materials

Operating data

Operating properties

Characteristic		Value	
		MVP	SVP
Flow rate	Q [m ³ /h]	≤ 66	≤ 88
	Q [l/s]	≤ 18,3	≤ 24,4
Head	H [m]	≤ 108	≤ 134
Fluid temperature	T _{min.} [°C]	≥ 0	≥ 0
	T _{max.} [°C]	≤ +60	≤ +60
Operating pressure	p [bar]	≤ 16	≤ 16
Max. inlet pressure	p _{inl.} [bar]	≤ 8	≤ 8
Motor rating	P [kW]	2,20	7,50

Design details

Design

- Fully automatic pressure booster system
- Variable speed operation
- Baseplate-mounted
- Membrane-type accumulator (direct-flow) to DIN 4807-5 on the discharge side, approved for drinking water, with shut-off element and drain valve.

- 2 (MVP / SVP) / 3 (MVP / SVP) / 4 (SVP) vertical high-pressure pumps with variable speed control
- Hydraulic components made of stainless steel / brass
- Check valve per pump
- Pressure gauge
- Integrated dry running protection
- Pressure transmitter on the discharge side
- Anti-vibration pads per system
- Discharge-side gate valve per pump
- Suction-side gate valve per pump
- Suction-side manifold and discharge-side manifold made of stainless steel

Installation

- Stationary dry installation

Drive

- Electric motor
- Enclosure IP55

MVP:

- Efficiency class IE3 to IEC 60034-30

SVP:

- Efficiency class IE5 to IEC 60034-30

Automation

- One frequency inverter per pump

SVP:

- Display on each frequency inverter
- Fault message signalling contact per pump
- Operation signalling contact per pump

Designation

Designation example

Position																									
1	2	3	4	5	6	7	8	9	10	11	12	13	14	15	16	17	18	19	20	21	22	23	24	25	26
K	D	B		S	V	P	2	-	0	1	0	/	1	1	0	M	5	A	1	1		/	0	0	0
K	D	C		M	V	P	2	-	0	0	2	/	1	4	0	M	5	A	0	1	0	/	0	0	0
K	D	M		S	V	P	4	-	0	4	0	/	0	3	0	M	5	A	1	1		/	0	0	0
K	D	P		-	V	C	3	-	0	1	5	/	0	8	0	M	5	S	3	1		/	1	0	0
K	D	S		M	V	P	1	-	0	0	4	/	1	2	0	M	5	S	3	1		/	0	0	0

See data sheet

Designation key

Position	Code	Description
1-3	Type series	
	KDB	KSB Delta Basic
	KDC	KSB Delta Solo Compact / KSB Delta Basic Compact
	KDM	KSB Delta Macro
	KDP	KSB Delta Primo
	KDS	KSB Delta Solo
5-7	Type of control	
	-F-	Fixed speed pumps
	-VC	Frequency inverter for variable speed operation, cabinet-mounted frequency inverter
	MVP	Frequency inverter for variable speed operation (Nastec Mida), motor-mounted frequency inverter, intelligent control of system by frequency inverter
	SVP	Frequency inverter per pump (PumpDrive 2 Eco / PumpDrive 2) at the motor
8	Number of pumps	
	1	1 pump
	2	2 pumps
	3	3 pumps
	4	4 pumps
	5	5 pumps
	6	6 pumps
10-12	Pump size	
	002	Movitec 2
	004	Movitec 4
	006	Movitec 6
	010	Movitec 10
	015	Movitec 15
	025	Movitec 25
	040	Movitec 40
	060	Movitec 60
	090	Movitec 90
	125	Movitec 125
	C02	Comeo 2
C04	Comeo 4	
	C06	Comeo 6
14-15	Number of pump stages	
	01, 02, 03, 04, 05, 06, 07, 08, 09, 10, 11, 12, 13, 14, 15, 16, 17, 18, 19, 20, 21, 22, 24, 26, 28, 30	
16	Impeller design	
	0	No trimmed impeller
	1	1 trimmed impeller
	2	2 trimmed impellers
	L	Impeller for low NPSH value
	R	1 trimmed L-version impeller ¹⁾
S	2 trimmed L-version impellers ¹⁾	

1983.531/06-EN

¹ L-version impeller = design for low NPSH values

Position	Code	Description
17	Inlet conditions	
	M	Inlet side of pressure booster system connected to the municipal water supply, suction head operation
	F	Pressure booster system with break tank arranged on same level as pump, suction head operation
	L	Pressure booster system with break tank arranged at a lower level, suction lift operation
18	Frequency [Hz]	
	5	50 Hz
	6	60 Hz
19	Drive	
	A	Asynchronous motor (IEC), standard
	S	KSB SuPremE
20	Frequency inverter design	
	0	Fixed speed
	1	Nastec Mida
	2	Danfoss Mididrive (FC280)
	3	PumpDrive 2 Eco
	4	PumpDrive 2
21	Control system design	
	0	Integrated in drive
	1	KSB Booster Control Advanced
22	Dry running protection (RDP) design	
	0	Cos phi
	1	Pressure switch
	2	Pressure switch with pressure gauge
	3	Pressure transmitters
	4	Pressure transmitter with pressure gauge
24	Connection type	
	0	C × T (cap x thread)
	1	C × F (cap x flange)
	2	F × F (blind flange x flange)
25	Control cabinet design	
	0	No optional equipment
	1	With optional equipment
26	Design	
	0	Standard design
	1/2	Special design

Configuration and function



Fig. 1: Design

1	Control cabinet	4	Membrane-type accumulator
2	Pump	5	Manifold
3	Frequency inverter	6	Baseplate

Design

The fully automatic pressure booster system is equipped with two, three or four (SVP) vertical high-pressure pumps (2) (all of which are speed-controlled) for pumping the fluid handled to the consumer installations in the set pressure range.

Function

Two, three or four (SVP) pumps (2) are controlled and monitored by motor-mounted frequency inverters.

As the demand increases or decreases, pumps are started and stopped automatically.

As soon as the demand increases again after one pump has been stopped, another pump which has not been in operation before is started up.

The stand-by pump is also included in the alternating cycle.

The standard setting is for the pressure booster system to start automatically as a function of pressure; the actual pressure is measured by an analog pressure transmitter.

As long as the pressure booster system is in operation, the pumps are started and stopped as a function of demand (standard setting). In this way it is ensured that the individual pumps operate only in line with actual demand.

The use of variable speed pumps reduces wear as well as the frequency of pump starts in parallel operation. If a duty pump fails, the next pump is started up immediately. A fault is output, which can be reported via volt-free contacts (e.g. to the control station).

If the demand drops towards 0, the pressure booster system slowly runs down to the stop point.

As standard, one of the pumps is on stand-by. The control system defines each of the pumps as stand-by pump in alternation. This prevents stagnation of water in any of the pumps. Via a parameter in the control system the stand-by pump function can be disabled in order to operate the system without stand-by function.

The pressure booster system is designed with integrated dry running protection.

The electrical connection cabinet contains digital contacts for a lack-of-water display.

KSB Delta Basic:

During commissioning and after every power failure, the pressure booster system fills the piping system slowly to prevent any damage to the piping by surge pressure.

Materials

Overview of available materials

Part No. (⇒ Page 36)	Description	Material
101	Pump casing	1.4308
10-6	Pump shroud	1.4301
200	Hydraulic system	1.4301
412	Elastomer	EPDM
433	Mechanical seal	To EN 12756
591	Membrane-type accumulator, connection	1.4401
742	Swing check valve	POM (polyoxymethylene)
743	Ball valve	Brass, nickel-coated
890	Baseplate	Steel, powder-coated
-	Membrane	Approved for drinking water

Product benefits

- Energy-efficient operation and constant pressure ensured by speed control of all pumps.
- Suitable for drinking water; manufactured under stringent hygienic conditions
- Easy and fast commissioning of ready-to-connect, pre-assembled and tested system
- Corrosion resistance provided by powder-coated materials and stainless steel
- Integral dry running protection for reliable operation

SVP:

- Prevention of damage to the piping through pipe priming/ filling function on version 3~400 V
- Remote monitoring of the system through connection to building management system

Product information

Product information as per Regulation No. 1907/2006 (REACH)

For information as per chemicals Regulation (EC) No. 1907/2006 (REACH), see <http://www.ksb.com/reach>.

Certifications

Overview

Label	Effective in:	Comment
	France	Approved in accordance with the French drinking water regulation
	United Kingdom	Approved in accordance with the UK drinking water regulation

Globe valves and swing check valve:

	Germany	Approved in accordance with the German drinking water regulation
--	---------	--

Selection information

Selection example

Requirements:

Specified duty point at:

- 2 duty pumps and 1 stand-by pump
- Flow rate: 10 m³/h
- Head: 50 m
- Inlet pressure: 1 bar

Solution:

1. Subtract the inlet pressure of 1 bar (approx. 10 m) from the head.
⇒ This results in a required head of 40 m.
2. Divide the flow rate required by the number of duty pumps. Transfer the values to the characteristic curves diagram to select the corresponding pump.
⇒ This results in the selection of a KSB Delta Basic 3/0605.

Technical data
KSB Delta Basic MVP

MVP = variable speed pressure booster system

3 × 400 V + N ± 10 %

Dry running protection = pressure switch

50 Hz

KSB Delta Basic	Number of pumps	Movitec	Number of stages	DN1	DN2	P _N		Efficiency class	I _N	Frequency of starts	I _{min} Overcurrent protection	I _{max} Overcurrent protection	Sound pressure level	Enclosure	PN	Mat. No.	[kg]
						[kW]											
MVP	2	02	02	G 1 1/2	G 1 1/2	0,37		IE-	4,5	50	7,8	25	60	IP55	16	48281304	64,08
MVP	2	02	03	G 1 1/2	G 1 1/2	0,37		IE-	4,5	50	7,8	25	60	IP55	16	48281305	64,97
MVP	2	02	04	G 1 1/2	G 1 1/2	0,37		IE-	4,5	50	7,8	25	60	IP55	16	48281306	65,9
MVP	2	02	05	G 1 1/2	G 1 1/2	0,37		IE-	4,5	50	7,8	25	60	IP55	16	48278511	66,83
MVP	2	02	06	G 1 1/2	G 1 1/2	0,55		IE-	4,5	50	7,8	25	60	IP55	16	48281307	70,74
MVP	2	02	07	G 1 1/2	G 1 1/2	0,55		IE-	4,5	50	7,8	25	60	IP55	16	48281308	71,62
MVP	2	02	08	G 1 1/2	G 1 1/2	0,55		IE-	4,5	50	7,8	25	60	IP55	16	48278512	73,04
MVP	2	02	09	G 1 1/2	G 1 1/2	0,75		IE3	7	180	13	25	55	IP55	16	48281309	78,76
MVP	2	02	10	G 1 1/2	G 1 1/2	0,75		IE3	7	180	13	25	55	IP55	16	48278513	79,72
MVP	2	02	11	G 1 1/2	G 1 1/2	1,10		IE3	7	180	13	25	55	IP55	16	48281310	85,25
MVP	2	02	12	G 1 1/2	G 1 1/2	1,10		IE3	7	180	13	25	55	IP55	16	48281311	86,2
MVP	2	02	14	G 1 1/2	G 1 1/2	1,10		IE3	7	180	13	25	55	IP55	16	48278514	88,53
MVP	2	02	18	G 1 1/2	G 1 1/2	1,50		IE3	11	50	19,1	25	55	IP55	16	48281313	101,72
MVP	2	02	20	G 1 1/2	G 1 1/2	1,50		IE3	11	50	19,1	25	55	IP55	16	48281314	109,16
MVP	2	04	02	G 1 1/2	G 1 1/2	0,37		IE-	4,5	50	7,8	25	60	IP55	16	48278515	63,92
MVP	2	04	03	G 1 1/2	G 1 1/2	0,55		IE-	4,5	50	7,8	25	60	IP55	16	48281315	67,71
MVP	2	04	04	G 1 1/2	G 1 1/2	0,55		IE-	4,5	50	7,8	25	60	IP55	16	48278516	68,56
MVP	2	04	05	G 1 1/2	G 1 1/2	0,75		IE3	7	180	13	25	55	IP55	16	48278517	74,16
MVP	2	04	06	G 1 1/2	G 1 1/2	1,10		IE3	7	180	13	25	55	IP55	16	48281316	79,62
MVP	2	04	07	G 1 1/2	G 1 1/2	1,10		IE3	7	180	13	25	55	IP55	16	48278518	80,91
MVP	2	04	08	G 1 1/2	G 1 1/2	1,50		IE3	11	50	19,1	25	55	IP55	16	48281317	91,21
MVP	2	04	09	G 1 1/2	G 1 1/2	1,50		IE3	11	50	19,1	25	55	IP55	16	48281318	92,11
MVP	2	04	10	G 1 1/2	G 1 1/2	1,50		IE3	11	50	19,1	25	55	IP55	16	48278519	92,99
MVP	2	04	11	G 1 1/2	G 1 1/2	2,20 (2,00)		IE3	11	30	19,1	25	55	IP55	16	48281319	102,92
MVP	2	04	12	G 1 1/2	G 1 1/2	2,20 (2,00)		IE3	11	30	19,1	25	55	IP55	16	48281320	103,79
MVP	2	06	02	G 1 1/2	G 1 1/2	0,37		IE-	4,5	50	7,8	25	60	IP55	16	48278520	66,42
MVP	2	06	03	G 1 1/2	G 1 1/2	0,75		IE3	7	180	13	25	55	IP55	16	48278521	75,09
MVP	2	06	04	G 1 1/2	G 1 1/2	1,10		IE3	7	180	13	25	55	IP55	16	48281321	80,67
MVP	2	06	05	G 1 1/2	G 1 1/2	1,10		IE3	7	180	13	25	55	IP55	16	48278522	81,65
MVP	2	06	06	G 1 1/2	G 1 1/2	1,50		IE3	11	50	19,1	25	55	IP55	16	48281322	92,52
MVP	2	06	07	G 1 1/2	G 1 1/2	1,50		IE3	11	50	19,1	25	55	IP55	16	48281323	93,55
MVP	2	06	08	G 1 1/2	G 1 1/2	2,20 (2,00)		IE3	11	30	19,1	25	55	IP55	16	48281324	103,13
MVP	2	06	09	G 1 1/2	G 1 1/2	2,20 (2,00)		IE3	11	30	19,1	25	55	IP55	16	48281325	104,11
MVP	2	10	01	G 2	G 2	0,75		IE3	7	180	13	25	55	IP55	16	48281326	97,39
MVP	2	10	02	G 2	G 2	0,75		IE3	7	180	13	25	55	IP55	16	48278525	97,91
MVP	2	10	03	G 2	G 2	1,10		IE3	7	180	13	25	55	IP55	16	48278526	104,79
MVP	2	10	04	G 2	G 2	1,50		IE3	11	50	19,1	25	55	IP55	16	48278527	116,1
MVP	2	10	05	G 2	G 2	2,20 (2,00)		IE3	11	30	19,1	25	55	IP55	16	48281327	126,52
MVP	2	15	01	DN 65	DN 65	1,10		IE3	7	180	13	25	55	IP55	16	48281328	109,74
MVP	2	15	02	DN 65	DN 65	2,20 (2,00)		IE3	11	30	19,1	25	55	IP55	16	48281329	129,1
MVP	3	02	02	G 1 1/2	G 1 1/2	0,37		IE-	4,5	50	7,8	25	60	IP55	16	48281533	88,52
MVP	3	02	03	G 1 1/2	G 1 1/2	0,37		IE-	4,5	50	7,8	25	60	IP55	16	48281534	89,86
MVP	3	02	04	G 1 1/2	G 1 1/2	0,37		IE-	4,5	50	7,8	25	60	IP55	16	48281535	91,26
MVP	3	02	05	G 1 1/2	G 1 1/2	0,37		IE-	4,5	50	7,8	25	60	IP55	16	48278528	92,65

KSB Delta Basic	Number of pumps	Movitec	Number of stages	DN1	DN2	P _N	Efficiency class	I _N	Frequency of starts	I _{min} Overcurrent protection	I _{max} Overcurrent protection	Sound pressure level	Enclosure	PN	Mat. No.	[kg]
						[kW]		[A]								
MVP	3	02	06	G 1 1/2	G 1 1/2	0,55	IE-	4,5	50	7,8	25	60	IP55	16	48281536	98,52
MVP	3	02	07	G 1 1/2	G 1 1/2	0,55	IE-	4,5	50	7,8	25	60	IP55	16	48281537	99,84
MVP	3	02	08	G 1 1/2	G 1 1/2	0,55	IE-	4,5	50	7,8	25	60	IP55	16	48278529	101,72
MVP	3	02	09	G 1 1/2	G 1 1/2	0,75	IE3	7	180	13	25	55	IP55	16	48281538	110,31
MVP	3	02	10	G 1 1/2	G 1 1/2	0,75	IE3	7	180	13	25	55	IP55	16	48278530	111,75
MVP	3	02	11	G 1 1/2	G 1 1/2	1,10	IE3	7	180	13	25	55	IP55	16	48281539	120,05
MVP	3	02	12	G 1 1/2	G 1 1/2	1,10	IE3	7	180	13	25	55	IP55	16	48281540	121,46
MVP	3	02	14	G 1 1/2	G 1 1/2	1,10	IE3	7	180	13	25	55	IP55	16	48281541	124,72
MVP	3	02	16	G 1 1/2	G 1 1/2	1,50	IE3	11	50	19,1	25	55	IP55	16	48281542	141,72
MVP	3	02	18	G 1 1/2	G 1 1/2	1,50	IE3	11	50	19,1	25	55	IP55	16	48281543	144,51
MVP	3	02	20	G 1 1/2	G 1 1/2	1,50	IE3	11	50	19,1	25	55	IP55	16	48281544	153,89
MVP	3	04	02	G 1 1/2	G 1 1/2	0,37	IE-	4,5	50	7,8	25	60	IP55	16	48278532	88,28
MVP	3	04	03	G 1 1/2	G 1 1/2	0,55	IE-	4,5	50	7,8	25	60	IP55	16	48281545	93,97
MVP	3	04	04	G 1 1/2	G 1 1/2	0,55	IE-	4,5	50	7,8	25	60	IP55	16	48278533	95,25
MVP	3	04	05	G 1 1/2	G 1 1/2	0,75	IE3	7	180	13	25	55	IP55	16	48278534	103,65
MVP	3	04	06	G 1 1/2	G 1 1/2	1,10	IE3	7	180	13	25	55	IP55	16	48281546	111,84
MVP	3	04	07	G 1 1/2	G 1 1/2	1,10	IE3	7	180	13	25	55	IP55	16	48278535	113,53
MVP	3	04	08	G 1 1/2	G 1 1/2	1,50	IE3	11	50	19,1	25	55	IP55	16	48281547	128,98
MVP	3	04	09	G 1 1/2	G 1 1/2	1,50	IE3	11	50	19,1	25	55	IP55	16	48281548	130,33
MVP	3	04	10	G 1 1/2	G 1 1/2	1,50	IE3	11	50	19,1	25	55	IP55	16	48278536	131,65
MVP	3	04	11	G 1 1/2	G 1 1/2	2,20 (2,00)	IE3	11	30	19,1	25	55	IP55	16	48281549	146,31
MVP	3	04	12	G 1 1/2	G 1 1/2	2,20 (2,00)	IE3	11	30	19,1	25	55	IP55	16	48281550	147,61
MVP	3	06	02	G 2	G 2	0,37	IE-	4,5	50	7,8	25	60	IP55	16	48278537	93,27
MVP	3	06	03	G 2	G 2	0,75	IE3	7	180	13	25	55	IP55	16	48278538	106,27
MVP	3	06	04	G 2	G 2	1,10	IE3	7	180	13	25	55	IP55	16	48281551	114,65
MVP	3	06	05	G 2	G 2	1,10	IE3	7	180	13	25	55	IP55	16	48278539	116,12
MVP	3	06	06	G 2	G 2	1,50	IE3	11	50	19,1	25	55	IP55	16	48281552	132,18
MVP	3	06	07	G 2	G 2	1,50	IE3	11	50	19,1	25	55	IP55	16	48278540	133,72
MVP	3	06	08	G 2	G 2	2,20 (2,00)	IE3	11	30	19,1	25	55	IP55	16	48281553	148,1
MVP	3	06	09	G 2	G 2	2,20 (2,00)	IE3	11	30	19,1	25	55	IP55	16	48281554	149,56
MVP	3	10	01	G 2	G 2	0,75	IE3	7	180	13	25	55	IP55	16	48281555	139,01
MVP	3	10	02	G 2	G 2	0,75	IE3	7	180	13	25	55	IP55	16	48278542	139,78
MVP	3	10	03	G 2	G 2	1,10	IE3	7	180	13	25	55	IP55	16	48278543	149,86
MVP	3	10	04	G 2	G 2	1,50	IE3	11	50	19,1	25	55	IP55	16	48278544	166,83
MVP	3	10	05	G 2	G 2	2,20 (2,00)	IE3	11	30	19,1	25	55	IP55	16	48281556	182,46
MVP	3	15	01	DN 65	DN 65	1,10	IE3	7	180	13	25	55	IP55	16	48281557	156,59
MVP	3	15	02	DN 65	DN 65	2,20 (2,00)	IE3	11	30	19,1	25	55	IP55	16	48281558	185,39

KSB Delta Basic SVP

SVP = variable speed pressure booster system with KSB SuPremE motor

 $3 \times 400 \text{ V} \pm 10 \%$

Dry running protection = pressure sensor

50 Hz

KSB Delta Basic	Number of pumps	Movitec	Number of stages	DN1	DN2	P _N [kW]	Efficiency class	I _N [A]	Frequency of starts [x/h]	I _{min} Overcurrent protection [A]	I _{max} Overcurrent protection [A]	Sound pressure level [dB(A)]	Enclosure	PN	Mat. No.	[kg]
SVP	2	02	02	G 1 1/2	G 1 1/2	0,37	IE-	1,3	-	3,8	25	70	IP55	16	48281330	72,46
SVP	2	02	03	G 1 1/2	G 1 1/2	0,37	IE-	1,3	-	3,8	25	70	IP55	16	48281331	73,35
SVP	2	02	04	G 1 1/2	G 1 1/2	0,37	IE-	1,3	-	3,8	25	70	IP55	16	48281332	74,28
SVP	2	02	05	G 1 1/2	G 1 1/2	0,55	IE5	1,8	-	5	25	70	IP55	16	48278545	75,21
SVP	2	02	06	G 1 1/2	G 1 1/2	0,55	IE5	1,8	-	5	25	70	IP55	16	48281333	76,14
SVP	2	02	07	G 1 1/2	G 1 1/2	0,55	IE5	1,8	-	5	25	70	IP55	16	48281334	77,02
SVP	2	02	08	G 1 1/2	G 1 1/2	0,75	IE5	2,5	-	6,4	25	70	IP55	16	48278546	78,44
SVP	2	02	09	G 1 1/2	G 1 1/2	0,75	IE5	2,5	-	6,4	25	70	IP55	16	48281335	82,56
SVP	2	02	10	G 1 1/2	G 1 1/2	0,75	IE5	2,5	-	6,4	25	70	IP55	16	48278547	83,52
SVP	2	02	11	G 1 1/2	G 1 1/2	1,10	IE5	3,5	-	8,4	25	70	IP55	16	48281336	88,45
SVP	2	02	12	G 1 1/2	G 1 1/2	1,10	IE5	3,5	-	8,4	25	70	IP55	16	48281337	89,4
SVP	2	02	14	G 1 1/2	G 1 1/2	1,10	IE5	3,5	-	8,4	25	70	IP55	16	48278548	91,73
SVP	2	02	16	G 1 1/2	G 1 1/2	1,50	IE5	4,9	-	8,9	25	70	IP55	16	48281338	100,47
SVP	2	02	18	G 1 1/2	G 1 1/2	1,50	IE5	4,9	-	8,9	25	70	IP55	16	48281339	102,33
SVP	2	02	20	G 1 1/2	G 1 1/2	1,50	IE5	4,9	-	8,9	25	70	IP55	16	48281340	107,77
SVP	2	04	02	G 1 1/2	G 1 1/2	0,37	IE-	1,3	-	3,8	25	70	IP55	16	48278549	72,3
SVP	2	04	03	G 1 1/2	G 1 1/2	0,55	IE5	1,8	-	5	25	70	IP55	16	48281341	73,11
SVP	2	04	04	G 1 1/2	G 1 1/2	0,75	IE5	2,5	-	6,4	25	70	IP55	16	48278550	73,96
SVP	2	04	05	G 1 1/2	G 1 1/2	0,75	IE5	2,5	-	6,4	25	70	IP55	16	48278551	77,96
SVP	2	04	06	G 1 1/2	G 1 1/2	1,10	IE5	3,5	-	8,4	25	70	IP55	16	48281342	82,82
SVP	2	04	07	G 1 1/2	G 1 1/2	1,10	IE5	3,5	-	8,4	25	70	IP55	16	48278552	84,11
SVP	2	04	08	G 1 1/2	G 1 1/2	1,50	IE5	4,9	-	8,9	25	70	IP55	16	48281343	91,82
SVP	2	04	09	G 1 1/2	G 1 1/2	1,50	IE5	4,9	-	8,9	25	70	IP55	16	48281344	92,72
SVP	2	04	10	G 1 1/2	G 1 1/2	1,50	IE5	4,9	-	8,9	25	70	IP55	16	48278553	93,6
SVP	2	04	11	G 1 1/2	G 1 1/2	2,20	IE5	6	-	12,8	25	70	IP55	16	48281345	103,93
SVP	2	04	12	G 1 1/2	G 1 1/2	2,20	IE5	6	-	12,8	25	70	IP55	16	48281346	104,8
SVP	2	04	14	G 1 1/2	G 1 1/2	2,20	IE5	6	-	12,8	25	70	IP55	16	48278554	106,49
SVP	2	04	16	G 1 1/2	G 1 1/2	3,00	IE5	8	-	16,3	25	71	IP55	16	48281347	121,33
SVP	2	06	02	G 1 1/2	G 1 1/2	0,55	IE5	1,8	-	5	25	70	IP55	16	48278555	74,8
SVP	2	06	03	G 1 1/2	G 1 1/2	0,75	IE5	2,5	-	6,4	25	70	IP55	16	48278556	78,89
SVP	2	06	04	G 1 1/2	G 1 1/2	1,10	IE5	3,5	-	8,4	25	70	IP55	16	48281348	83,87
SVP	2	06	05	G 1 1/2	G 1 1/2	1,10	IE5	3,5	-	8,4	25	70	IP55	16	48278557	84,85
SVP	2	06	06	G 1 1/2	G 1 1/2	1,50	IE5	4,9	-	8,9	25	70	IP55	16	48281349	93,13
SVP	2	06	07	G 1 1/2	G 1 1/2	1,50	IE5	4,9	-	8,9	25	70	IP55	16	48278558	94,15
SVP	2	06	08	G 1 1/2	G 1 1/2	2,20	IE5	6	-	12,8	25	70	IP55	16	48281350	104,14
SVP	2	06	09	G 1 1/2	G 1 1/2	2,20	IE5	6	-	12,8	25	70	IP55	16	48281351	105,11
SVP	2	06	10	G 1 1/2	G 1 1/2	2,20	IE5	6	-	12,8	25	70	IP55	16	48278559	106,61
SVP	2	06	11	G 1 1/2	G 1 1/2	3,00	IE5	8	-	16,3	25	71	IP55	16	48281352	120,7
SVP	2	06	12	G 1 1/2	G 1 1/2	3,00	IE5	8	-	16,3	25	71	IP55	16	48281353	121,69
SVP	2	06	14	G 1 1/2	G 1 1/2	3,00	IE5	8	-	16,3	25	71	IP55	16	48278560	123,65
SVP	2	06	16	G 1 1/2	G 1 1/2	4,00	IE5	10	-	16,6	25	71	IP55	16	48281354	150,8
SVP	2	10	01	G 2	G 2	0,75	IE5	2,5	-	6,4	25	70	IP55	16	48281355	101,19
SVP	2	10	02	G 2	G 2	0,75	IE5	2,5	-	6,4	25	70	IP55	16	48278561	101,71
SVP	2	10	03	G 2	G 2	1,10	IE5	3,5	-	8,4	25	70	IP55	16	48278562	107,99
SVP	2	10	04	G 2	G 2	1,50	IE5	4,9	-	8,9	25	70	IP55	16	48278563	116,71
SVP	2	10	05	G 2	G 2	2,20	IE5	6	-	12,8	25	70	IP55	16	48281356	127,53
SVP	2	10	06	G 2	G 2	2,20	IE5	6	-	12,8	25	70	IP55	16	48278564	129,34

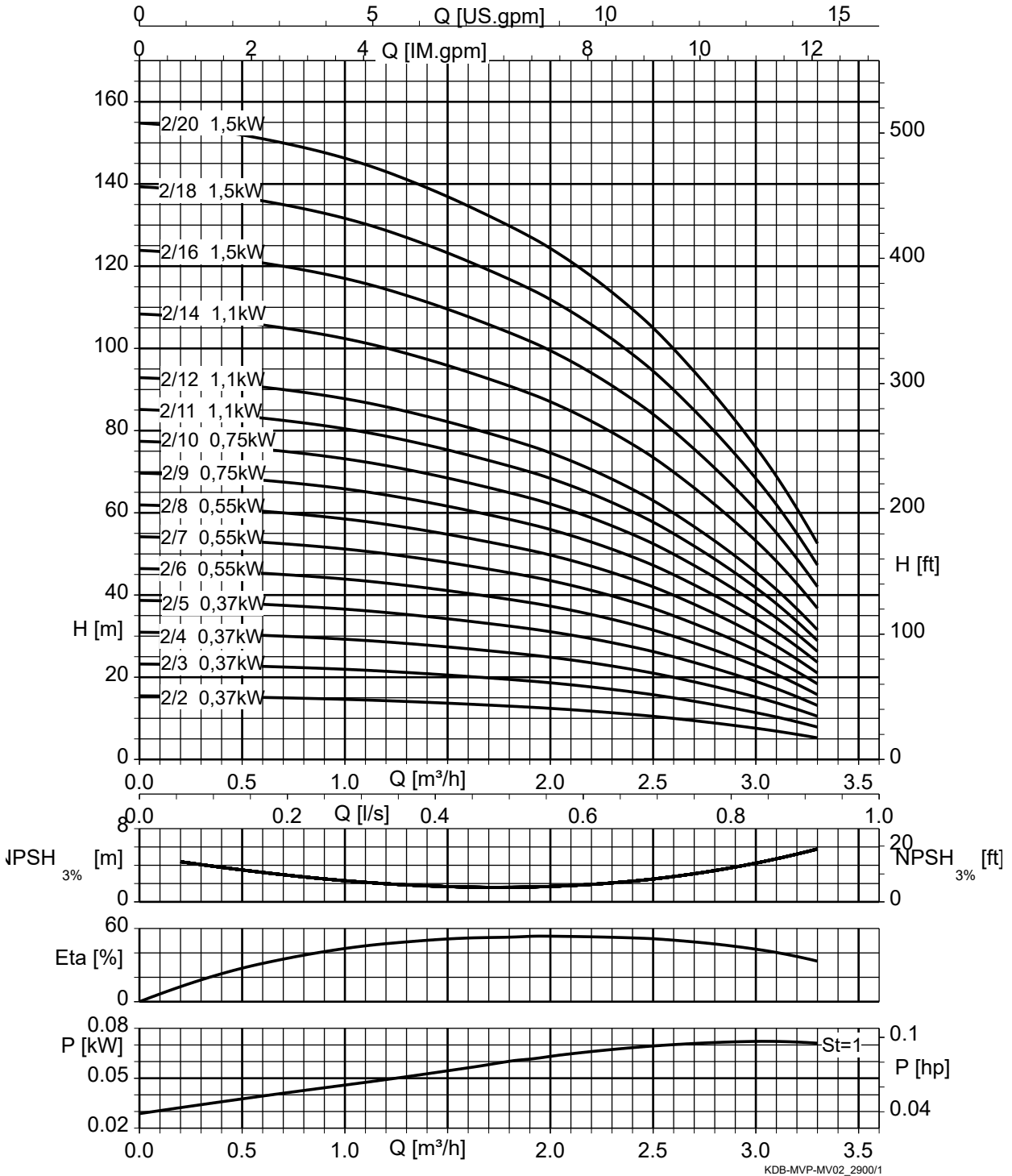
KSB Delta Basic	Number of pumps	Movitec	Number of stages	DN1	DN2	P _N [kW]	Efficiency class	I _N [A]	Frequency of starts [x/h]	I _{min} Overcurrent protection [A]	I _{max} Overcurrent protection [A]	Sound pressure level [dB(A)]	Enclosure	PN	Mat. No.	[kg]
SVP	2	10	07	G 2	G 2	3,00	IE5	8	-	16,3	25	71	IP55	16	48281357	144,89
SVP	2	10	08	G 2	G 2	3,00	IE5	8	-	16,3	25	71	IP55	16	48278565	146,76
SVP	2	10	09	G 2	G 2	4,00	IE5	10	-	16,6	25	71	IP55	16	48281358	171,4
SVP	2	10	10	G 2	G 2	4,00	IE5	10	-	16,6	25	71	IP55	16	48281359	176,87
SVP	2	10	11	G 2	G 2	4,00	IE5	10	-	16,6	25	71	IP55	16	48278566	178,79
SVP	2	10	13	G 2	G 2	5,50	IE5	14	-	25,2	40	71	IP55	16	48281360	235,66
SVP	2	15	01	DN 65	DN 65	1,10	IE5	3,5	-	8,4	25	70	IP55	16	48281361	112,94
SVP	2	15	02	DN 65	DN 65	2,20	IE5	6	-	12,8	25	70	IP55	16	48278567	130,11
SVP	2	15	03	DN 65	DN 65	3,00	IE5	8	-	16,3	25	71	IP55	16	48278568	145,45
SVP	2	15	04	DN 65	DN 65	4,00	IE5	10	-	16,6	25	71	IP55	16	48278569	169,21
SVP	2	15	05	DN 65	DN 65	5,50	IE5	14	-	25,2	40	71	IP55	16	48281362	207,81
SVP	2	15	06	DN 65	DN 65	5,50	IE5	14	-	25,2	40	71	IP55	16	48278570	209,94
SVP	2	15	07	DN 65	DN 65	7,50	IE5	18	-	31,8	40	71	IP55	16	48281363	244,01
SVP	2	15	08	DN 65	DN 65	7,50	IE5	18	-	31,8	40	71	IP55	16	48278571	246,09
SVP	3	02	02	G 1 1/2	G 1 1/2	0,37	IE-	1,3	-	5,2	25	70	IP55	16	48281558	101,07
SVP	3	02	03	G 1 1/2	G 1 1/2	0,37	IE-	1,3	-	5,2	25	70	IP55	16	48281559	102,41
SVP	3	02	04	G 1 1/2	G 1 1/2	0,37	IE-	1,3	-	5,2	25	70	IP55	16	48281560	103,8
SVP	3	02	05	G 1 1/2	G 1 1/2	0,55	IE5	1,8	-	7	25	70	IP55	16	48278572	105,19
SVP	3	02	06	G 1 1/2	G 1 1/2	0,55	IE5	1,8	-	7	25	70	IP55	16	48281561	106,59
SVP	3	02	07	G 1 1/2	G 1 1/2	0,55	IE5	1,8	-	7	25	70	IP55	16	48281562	107,92
SVP	3	02	08	G 1 1/2	G 1 1/2	0,75	IE5	2,5	-	9,1	25	70	IP55	16	48278573	109,8
SVP	3	02	09	G 1 1/2	G 1 1/2	0,75	IE5	2,5	-	9,1	25	70	IP55	16	48281563	115,99
SVP	3	02	10	G 1 1/2	G 1 1/2	0,75	IE5	2,5	-	9,1	25	70	IP55	16	48278574	117,42
SVP	3	02	11	G 1 1/2	G 1 1/2	1,10	IE5	3,5	-	12,1	25	70	IP55	16	48281564	124,83
SVP	3	02	12	G 1 1/2	G 1 1/2	1,10	IE5	3,5	-	12,1	25	70	IP55	16	48281565	126,24
SVP	3	02	14	G 1 1/2	G 1 1/2	1,10	IE5	3,5	-	12,1	25	70	IP55	16	48278575	129,49
SVP	3	02	16	G 1 1/2	G 1 1/2	1,50	IE5	4,9	-	12,8	25	70	IP55	16	48281566	142,61
SVP	3	02	18	G 1 1/2	G 1 1/2	1,50	IE5	4,9	-	12,8	25	70	IP55	16	48281567	145,4
SVP	3	02	20	G 1 1/2	G 1 1/2	1,50	IE5	4,9	-	12,8	25	70	IP55	16	48281568	151,78
SVP	3	04	02	G 1 1/2	G 1 1/2	0,37	IE-	1,3	-	5,2	25	70	IP55	16	48278576	100,83
SVP	3	04	03	G 1 1/2	G 1 1/2	0,55	IE5	1,8	-	7	25	70	IP55	16	48281569	102,05
SVP	3	04	04	G 1 1/2	G 1 1/2	0,75	IE5	2,5	-	9,1	25	70	IP55	16	48278577	103,33
SVP	3	04	05	G 1 1/2	G 1 1/2	0,75	IE5	2,5	-	9,1	25	70	IP55	16	48278578	109,33
SVP	3	04	06	G 1 1/2	G 1 1/2	1,10	IE5	3,5	-	12,1	25	70	IP55	16	48281570	116,61
SVP	3	04	07	G 1 1/2	G 1 1/2	1,10	IE5	3,5	-	12,1	25	70	IP55	16	48278579	118,3
SVP	3	04	08	G 1 1/2	G 1 1/2	1,50	IE5	4,9	-	12,8	25	70	IP55	16	48281571	129,87
SVP	3	04	09	G 1 1/2	G 1 1/2	1,50	IE5	4,9	-	12,8	25	70	IP55	16	48281572	131,22
SVP	3	04	10	G 1 1/2	G 1 1/2	1,50	IE5	4,9	-	12,8	25	70	IP55	16	48278580	132,54
SVP	3	04	11	G 1 1/2	G 1 1/2	2,20	IE5	6	-	18,6	25	70	IP55	16	48281573	147,8
SVP	3	04	12	G 1 1/2	G 1 1/2	2,20	IE5	6	-	18,6	25	70	IP55	16	48281574	149,1
SVP	3	04	14	G 1 1/2	G 1 1/2	2,20	IE5	6	-	18,6	25	70	IP55	16	48278581	151,64
SVP	3	04	16	G 1 1/2	G 1 1/2	3,00	IE5	8	-	24	25	71	IP55	16	48281575	173,9
SVP	3	06	02	G 2	G 2	0,55	IE5	1,8	-	7	25	70	IP55	16	48278582	105,82
SVP	3	06	03	G 2	G 2	0,75	IE5	2,5	-	9,1	25	70	IP55	16	48278583	111,95
SVP	3	06	04	G 2	G 2	1,10	IE5	3,5	-	12,1	25	70	IP55	16	48281576	119,43
SVP	3	06	05	G 2	G 2	1,10	IE5	3,5	-	12,1	25	70	IP55	16	48278584	120,9
SVP	3	06	06	G 2	G 2	1,50	IE5	4,9	-	12,8	25	70	IP55	16	48281577	133,08
SVP	3	06	07	G 2	G 2	1,50	IE5	4,9	-	12,8	25	70	IP55	16	48278585	134,61
SVP	3	06	08	G 2	G 2	2,20	IE5	6	-	18,6	25	70	IP55	16	48281578	149,59
SVP	3	06	09	G 2	G 2	2,20	IE5	6	-	18,6	25	70	IP55	16	48281579	151,05
SVP	3	06	10	G 2	G 2	2,20	IE5	6	-	18,6	25	70	IP55	16	48278586	153,05
SVP	3	06	11	G 2	G 2	3,00	IE5	8	-	24	25	71	IP55	16	48281580	174,19

KSB Delta Basic	Number of pumps	Movitec	Number of stages	DN1	DN2	P _N		Efficiency class	I _N	Frequency of starts	I _{min} Overcurrent protection	I _{max} Overcurrent protection	Sound pressure level	Enclosure	PN	Mat. No.	[kg]
						[kW]	[A]										
SVP	3	06	12	G 2	G 2	3,00	IE5	8	-	24	25	71	IP55	16	48281581	175,67	
SVP	3	06	14	G 2	G 2	3,00	IE5	8	-	24	25	71	IP55	16	48278587	178,62	
SVP	3	06	16	G 2	G 2	4,00	IE5	10	-	24,4	25	71	IP55	16	48281582	217,57	
SVP	3	10	01	G 2	G 2	0,75	IE5	2,5	-	9,1	25	70	IP55	16	48281583	144,69	
SVP	3	10	02	G 2	G 2	0,75	IE5	2,5	-	9,1	25	70	IP55	16	48278588	145,46	
SVP	3	10	03	G 2	G 2	1,10	IE5	3,5	-	12,1	25	70	IP55	16	48278589	154,64	
SVP	3	10	04	G 2	G 2	1,50	IE5	4,9	-	12,8	25	70	IP55	16	48278590	167,72	
SVP	3	10	05	G 2	G 2	2,20	IE5	6	-	18,6	25	70	IP55	16	48281584	183,95	
SVP	3	10	06	G 2	G 2	2,20	IE5	6	-	18,6	25	70	IP55	16	48278591	186,67	
SVP	3	10	07	G 2	G 2	3,00	IE5	8	-	24	25	71	IP55	16	48281585	209,76	
SVP	3	10	08	G 2	G 2	3,00	IE5	8	-	24	25	71	IP55	16	48278592	212,56	
SVP	3	10	09	G 2	G 2	4,00	IE5	10	-	24,4	25	71	IP55	16	48281586	249,52	
SVP	3	10	10	G 2	G 2	4,00	IE5	10	-	24,4	25	71	IP55	16	48281587	255,95	
SVP	3	10	11	G 2	G 2	4,00	IE5	10	-	24,4	25	71	IP55	16	48278593	258,83	
SVP	3	10	13	G 2	G 2	5,50	IE5	14	-	37,3	40	71	IP55	16	48281588	344,13	
SVP	3	15	01	DN 65	DN 65	1,10	IE5	3,5	-	12,1	25	70	IP55	16	48281589	161,37	
SVP	3	15	02	DN 65	DN 65	2,20	IE5	6	-	18,6	25	70	IP55	16	48278594	186,88	
SVP	3	15	03	DN 65	DN 65	3,00	IE5	8	-	24	25	71	IP55	16	48278595	209,89	
SVP	3	15	04	DN 65	DN 65	4,00	IE5	10	-	24,4	25	71	IP55	16	48278596	245,54	
SVP	3	15	05	DN 65	DN 65	5,50	IE5	14	-	37,3	40	71	IP55	16	48281590	301,42	
SVP	3	15	06	DN 65	DN 65	5,50	IE5	14	-	37,3	40	71	IP55	16	48278597	304,61	
SVP	3	15	07	DN 65	DN 65	7,50	IE5	18	-	47,1	50	71	IP55	16	48281591	355,72	
SVP	3	15	08	DN 65	DN 65	7,50	IE5	18	-	47,1	50	71	IP55	16	48278598	358,85	
SVP	4	02	02	G 1 1/2	G 1 1/2	0,37	IE-	1,3	-	6,6	25	70	IP55	16	48281760	132,68	
SVP	4	02	03	G 1 1/2	G 1 1/2	0,37	IE-	1,3	-	6,6	25	70	IP55	16	48281761	134,46	
SVP	4	02	04	G 1 1/2	G 1 1/2	0,37	IE-	1,3	-	6,6	25	70	IP55	16	48281762	136,32	
SVP	4	02	05	G 1 1/2	G 1 1/2	0,55	IE5	1,8	-	9	25	70	IP55	16	48276279	138,17	
SVP	4	02	06	G 1 1/2	G 1 1/2	0,55	IE5	1,8	-	9	25	70	IP55	16	48281763	140,04	
SVP	4	02	07	G 1 1/2	G 1 1/2	0,55	IE5	1,8	-	9	25	70	IP55	16	48281764	141,81	
SVP	4	02	08	G 1 1/2	G 1 1/2	0,75	IE5	2,5	-	11,8	25	70	IP55	16	48276280	144,15	
SVP	4	02	09	G 1 1/2	G 1 1/2	0,75	IE5	2,5	-	11,8	25	70	IP55	16	48281765	152,41	
SVP	4	02	10	G 1 1/2	G 1 1/2	0,75	IE5	2,5	-	11,8	25	70	IP55	16	48276281	154,32	
SVP	4	02	11	G 1 1/2	G 1 1/2	1,10	IE5	3,5	-	15,8	25	70	IP55	16	48281766	164,19	
SVP	4	02	12	G 1 1/2	G 1 1/2	1,10	IE5	3,5	-	15,8	25	70	IP55	16	48281767	166,07	
SVP	4	02	14	G 1 1/2	G 1 1/2	1,10	IE5	3,5	-	15,8	25	70	IP55	16	48276282	170,25	
SVP	4	02	16	G 1 1/2	G 1 1/2	1,50	IE5	4,9	-	16,7	25	70	IP55	16	48281768	187,74	
SVP	4	02	18	G 1 1/2	G 1 1/2	1,50	IE5	4,9	-	16,7	25	70	IP55	16	48281769	191,46	
SVP	4	02	20	G 1 1/2	G 1 1/2	1,50	IE5	4,9	-	16,7	25	70	IP55	16	48281770	198,79	
SVP	4	04	02	G 1 1/2	G 1 1/2	0,37	IE-	1,3	-	6,6	25	70	IP55	16	48276283	132,36	
SVP	4	04	03	G 1 1/2	G 1 1/2	0,55	IE5	1,8	-	9	25	70	IP55	16	48281771	133,98	
SVP	4	04	04	G 1 1/2	G 1 1/2	0,75	IE5	2,5	-	11,8	25	70	IP55	16	48276284	135,69	
SVP	4	04	05	G 1 1/2	G 1 1/2	0,75	IE5	2,5	-	11,8	25	70	IP55	16	48276285	143,69	
SVP	4	04	06	G 1 1/2	G 1 1/2	1,10	IE5	3,5	-	15,8	25	70	IP55	16	48281772	153,4	
SVP	4	04	07	G 1 1/2	G 1 1/2	1,10	IE5	3,5	-	15,8	25	70	IP55	16	48276286	155,49	
SVP	4	04	08	G 1 1/2	G 1 1/2	1,50	IE5	4,9	-	16,7	25	70	IP55	16	48281773	170,92	
SVP	4	04	09	G 1 1/2	G 1 1/2	1,50	IE5	4,9	-	16,7	25	70	IP55	16	48281774	172,72	
SVP	4	04	10	G 1 1/2	G 1 1/2	1,50	IE5	4,9	-	16,7	25	70	IP55	16	48276287	174,47	
SVP	4	04	11	G 1 1/2	G 1 1/2	2,20	IE5	6	-	24,5	25	70	IP55	16	48281775	194,66	
SVP	4	04	12	G 1 1/2	G 1 1/2	2,20	IE5	6	-	24,5	25	70	IP55	16	48281776	196,39	
SVP	4	04	14	G 1 1/2	G 1 1/2	2,20	IE5	6	-	24,5	25	70	IP55	16	48276288	199,78	
SVP	4	04	16	G 1 1/2	G 1 1/2	3,00	IE5	8	-	31,7	40	71	IP55	16	48281777	229,46	
SVP	4	06	02	G 2	G 2	0,55	IE5	1,8	-	9	25	70	IP55	16	48276289	138,9	

KSB Delta Basic	Number of pumps	Movitec	Number of stages	DN1	DN2	P _N		Efficiency class	I _N	Frequency of starts	I _{min} Overcurrent protection	I _{max} Overcurrent protection	Sound pressure level	Enclosure	PN	Mat. No.	[kg]
						[kW]	[A]										
SVP	4	06	03	G 2	G 2	0,75	IE5	2,5	-	11,8	25	70	IP55	16	48276290	147,08	
SVP	4	06	04	G 2	G 2	1,10	IE5	3,5	-	15,8	25	70	IP55	16	48281778	157,05	
SVP	4	06	05	G 2	G 2	1,10	IE5	3,5	-	15,8	25	70	IP55	16	48276291	159,01	
SVP	4	06	06	G 2	G 2	1,50	IE5	4,9	-	16,7	25	70	IP55	16	48281779	175,08	
SVP	4	06	07	G 2	G 2	1,50	IE5	4,9	-	16,7	25	70	IP55	16	48276292	177,14	
SVP	4	06	08	G 2	G 2	2,20	IE5	6	-	24,5	25	70	IP55	16	48281780	197,11	
SVP	4	06	09	G 2	G 2	2,20	IE5	6	-	24,5	25	70	IP55	16	48281781	199,06	
SVP	4	06	10	G 2	G 2	2,20	IE5	6	-	24,5	25	70	IP55	16	48276293	201,56	
SVP	4	06	11	G 2	G 2	3,00	IE5	8	-	31,7	40	71	IP55	16	48281782	229,75	
SVP	4	06	12	G 2	G 2	3,00	IE5	8	-	31,7	40	71	IP55	16	48281783	231,72	
SVP	4	06	14	G 2	G 2	3,00	IE5	8	-	31,7	40	71	IP55	16	48276294	235,65	
SVP	4	06	16	G 2	G 2	4,00	IE5	10	-	32,2	40	71	IP55	16	48281784	286,4	
SVP	4	10	01	DN 65	DN 65	0,75	IE5	2,5	-	11,8	25	70	IP55	16	48281785	194,18	
SVP	4	10	02	DN 65	DN 65	0,75	IE5	2,5	-	11,8	25	70	IP55	16	48276295	195,21	
SVP	4	10	03	DN 65	DN 65	1,10	IE5	3,5	-	15,8	25	70	IP55	16	48276296	207,3	
SVP	4	10	04	DN 65	DN 65	1,50	IE5	4,9	-	16,7	25	70	IP55	16	48276297	224,74	
SVP	4	10	05	DN 65	DN 65	2,20	IE5	6	-	24,5	25	70	IP55	16	48281786	246,37	
SVP	4	10	06	DN 65	DN 65	2,20	IE5	6	-	24,5	25	70	IP55	16	48276298	250	
SVP	4	10	07	DN 65	DN 65	3,00	IE5	8	-	31,7	40	71	IP55	16	48281787	280,62	
SVP	4	10	08	DN 65	DN 65	3,00	IE5	8	-	31,7	40	71	IP55	16	48276299	284,36	
SVP	4	10	09	DN 65	DN 65	4,00	IE5	10	-	32,2	40	71	IP55	16	48281788	333,64	
SVP	4	10	10	DN 65	DN 65	4,00	IE5	10	-	32,2	40	71	IP55	16	48281789	341,03	
SVP	4	10	11	DN 65	DN 65	4,00	IE5	10	-	32,2	40	71	IP55	16	48276300	344,87	
SVP	4	10	13	DN 65	DN 65	5,50	IE5	14	-	49,4	50	71	IP55	16	48281790	458,6	
SVP	4	15	01	DN 100	DN 100	1,10	IE5	3,5	-	15,8	25	70	IP55	16	48281791	215,56	
SVP	4	15	02	DN 100	DN 100	2,20	IE5	6	-	24,5	25	70	IP55	16	48276301	249,42	
SVP	4	15	03	DN 100	DN 100	3,00	IE5	8	-	31,7	40	71	IP55	16	48276302	280,09	
SVP	4	15	04	DN 100	DN 100	4,00	IE5	10	-	32,2	40	71	IP55	16	48276303	327,63	
SVP	4	15	05	DN 100	DN 100	5,50	IE5	14	-	49,4	50	71	IP55	16	48281792	400,79	
SVP	4	15	06	DN 100	DN 100	5,50	IE5	14	-	49,4	50	71	IP55	16	48276304	405,04	
SVP	4	15	07	DN 100	DN 100	7,50	IE5	18	-	62,5	63	71	IP55	16	48281793	473,19	
SVP	4	15	08	DN 100	DN 100	7,50	IE5	18	-	62,5	63	71	IP55	16	48276305	477,36	

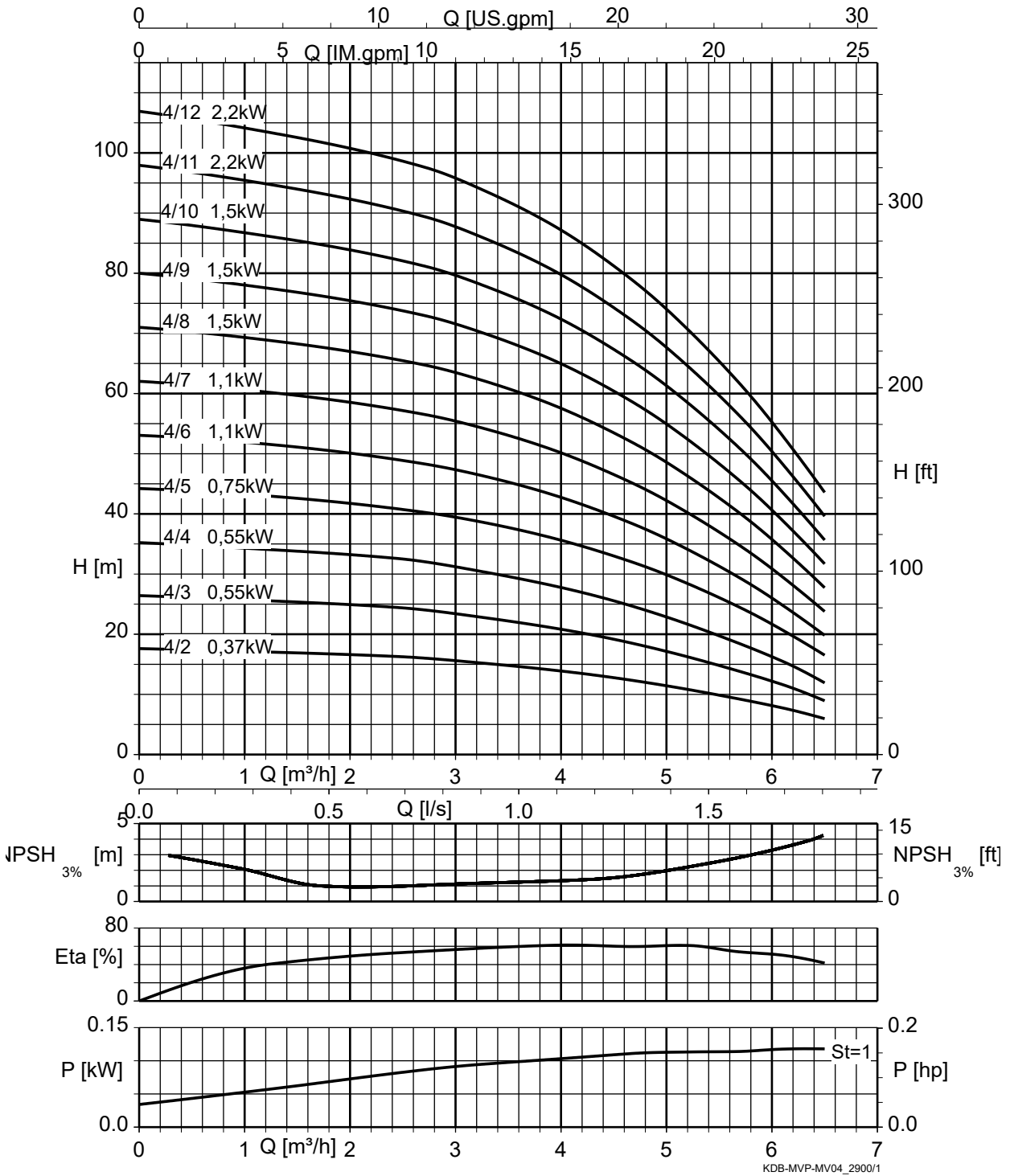
Characteristic curves

KSB Delta Basic MVP, Movitec 02, n = 2900 rpm



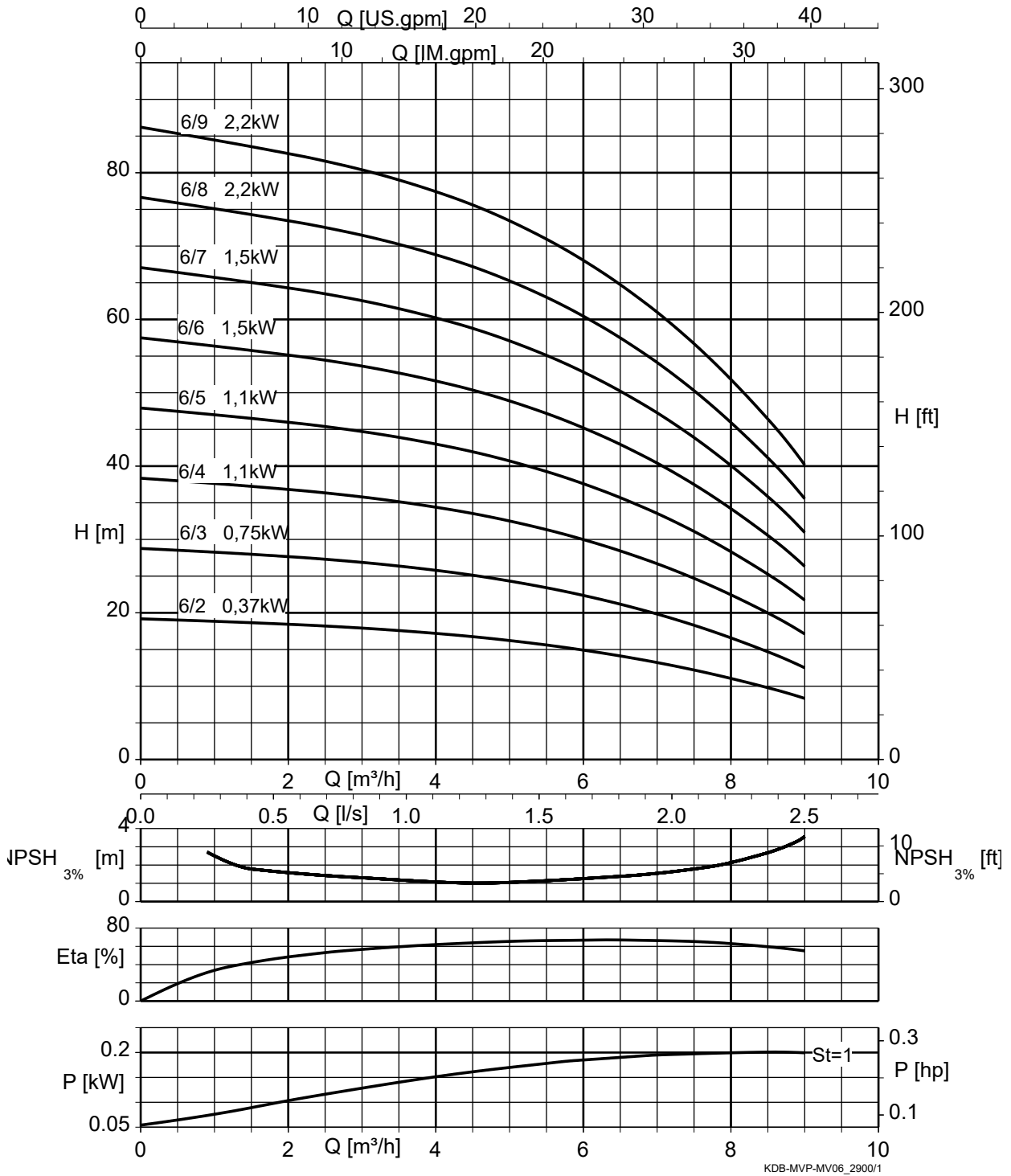
St = 1 | P per stage

KSB Delta Basic MVP, Movitec 04, n = 2900 rpm



St = 1 | P per stage

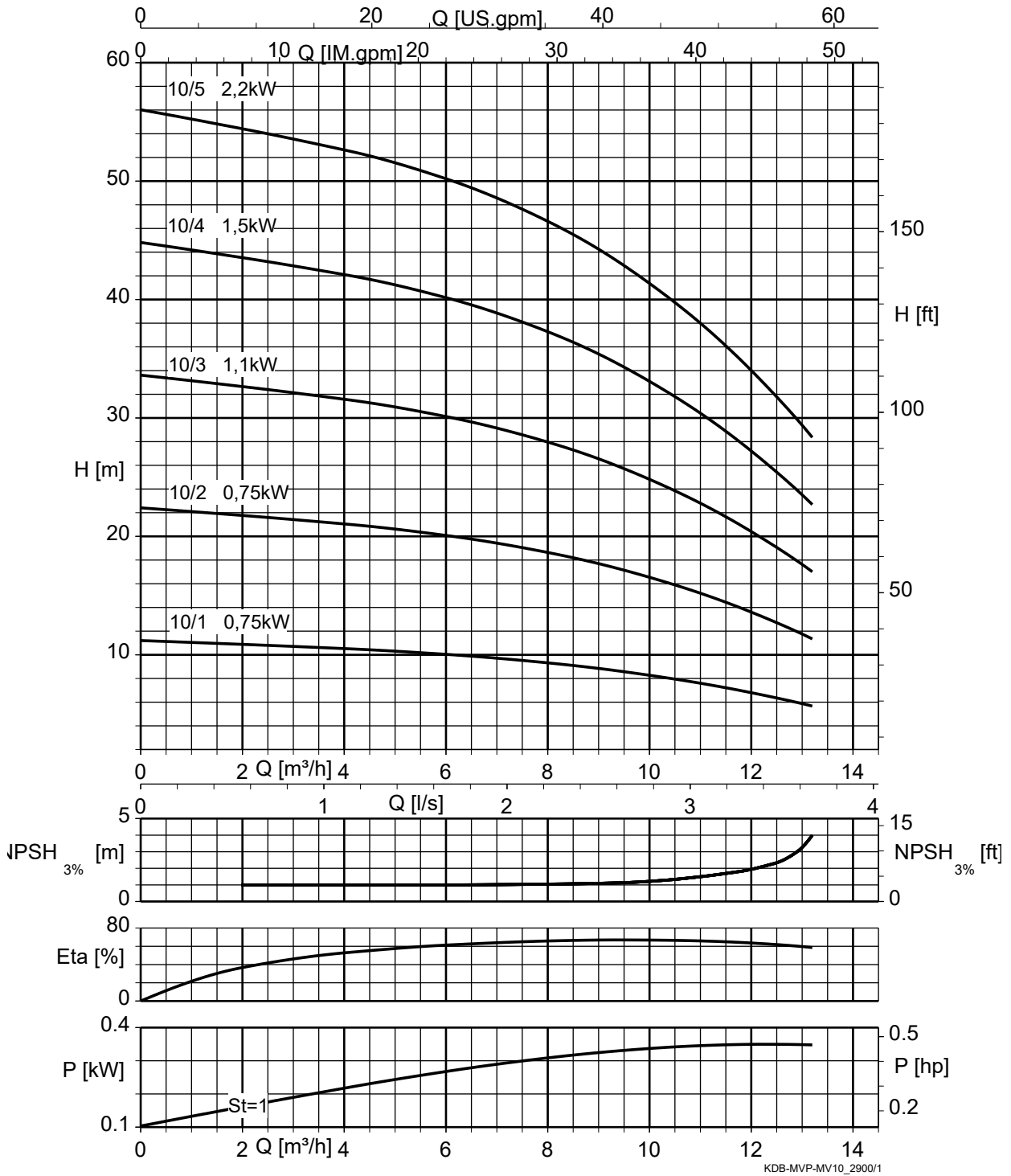
KSB Delta Basic MVP, Movitec 06, n = 2900 rpm



KDB-MVP-MV06_2900/1

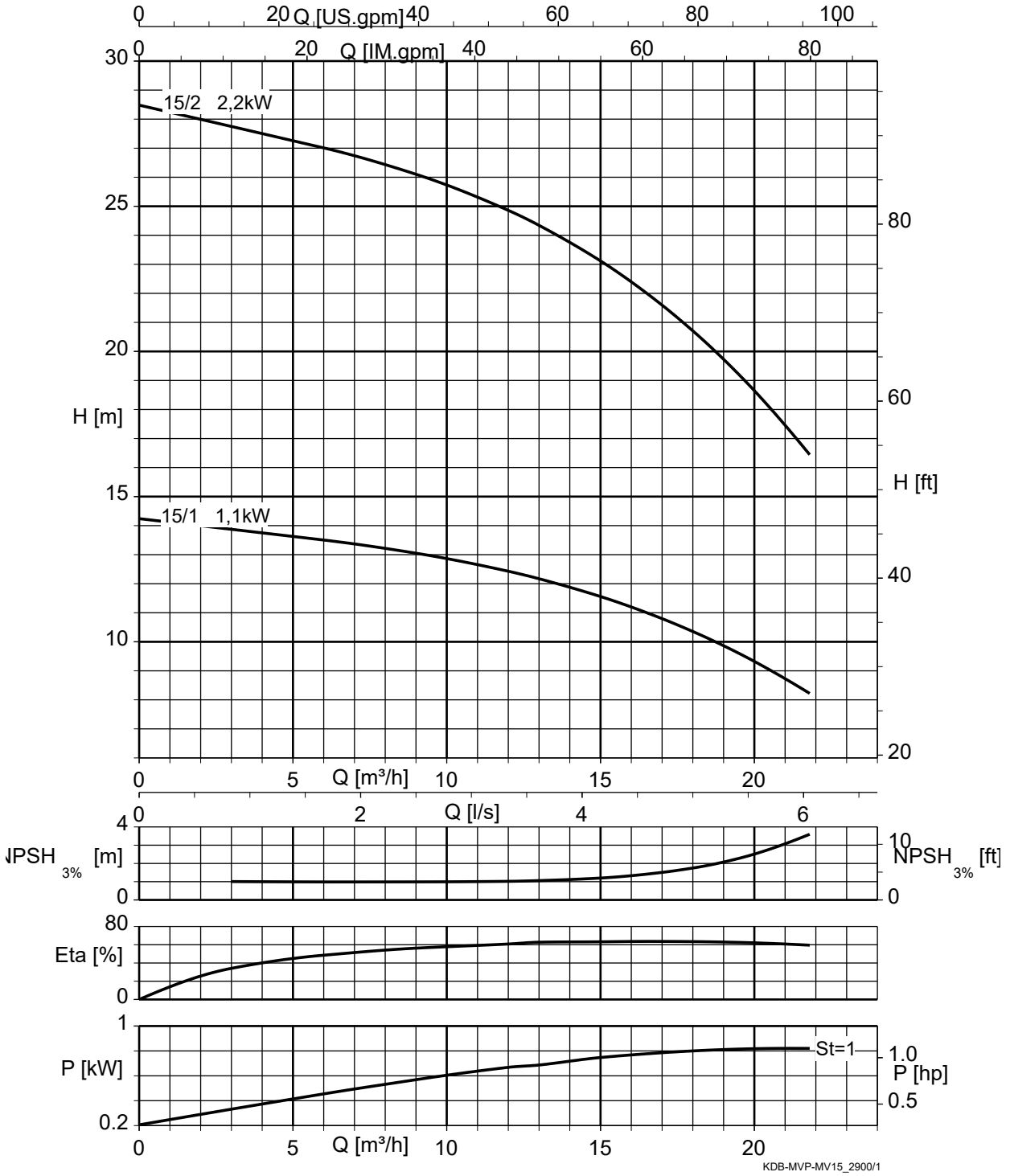
St = 1 | P per stage

KSB Delta Basic MVP, Movitec 10, n = 2900 rpm



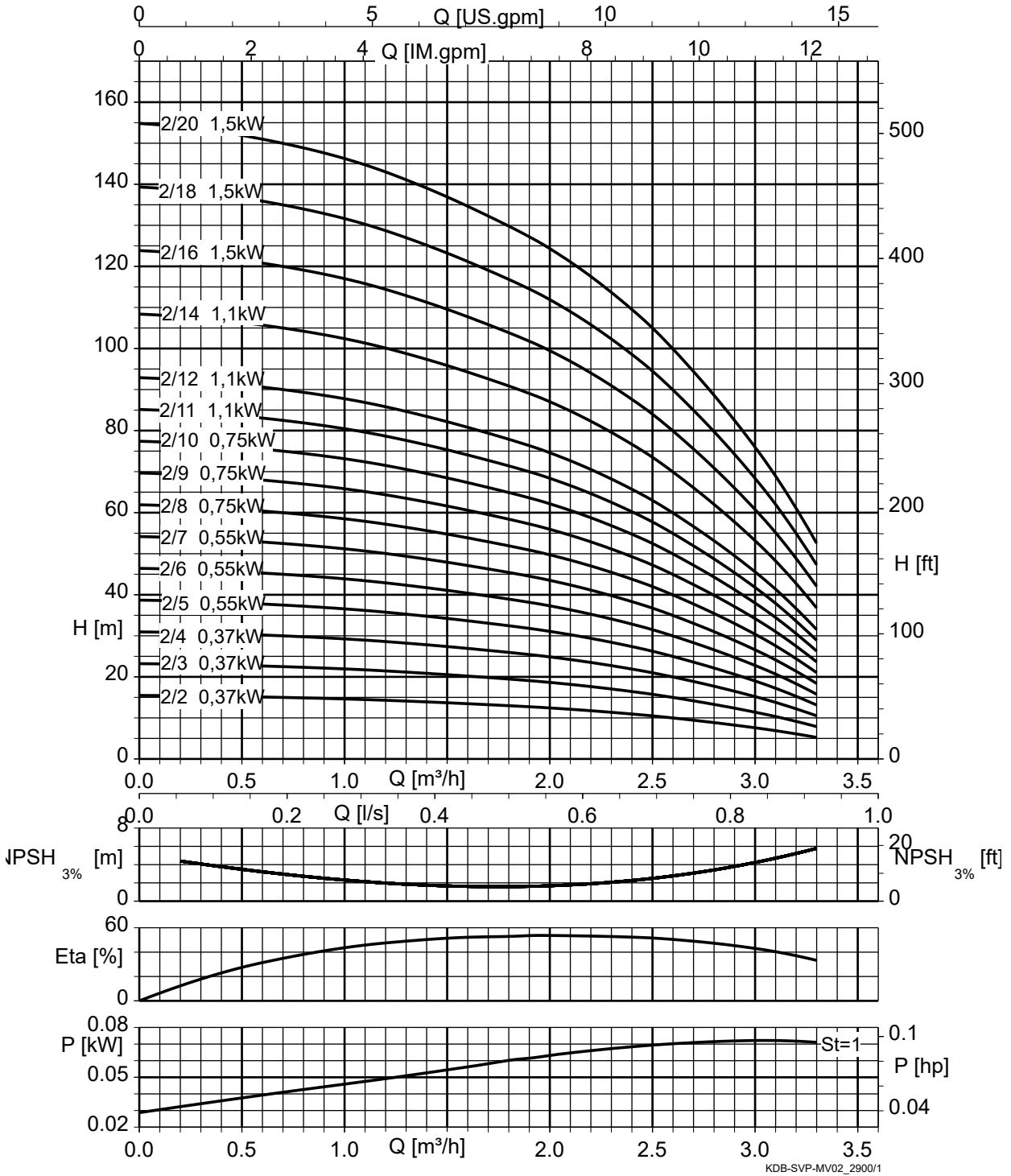
St = 1 | P per stage

KSB Delta Basic MVP, Movitec 15, n = 2900 rpm



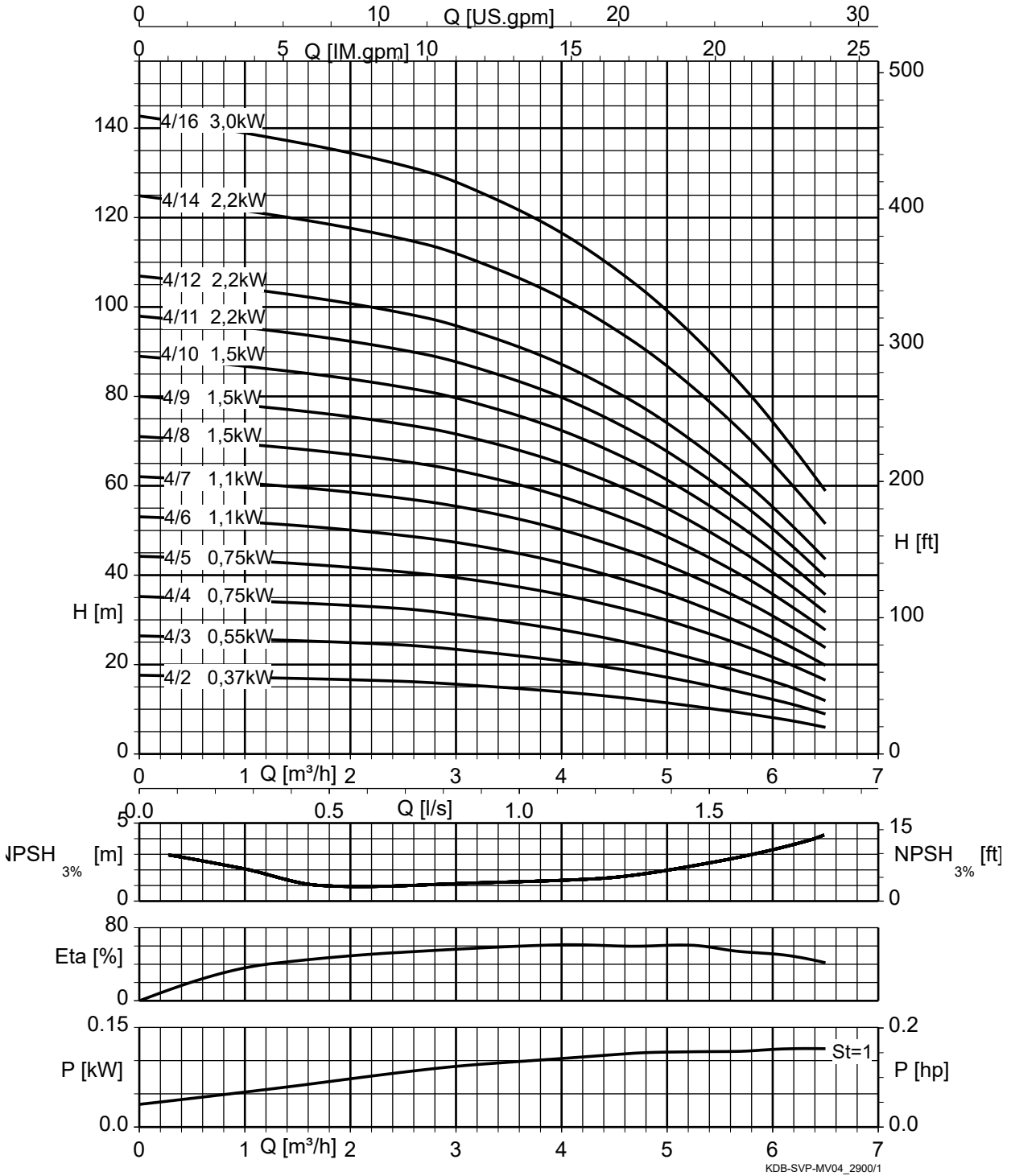
St = 1 | P per stage

KSB Delta Basic SVP, Movitec 02, n = 2900 rpm



St = 1 | P per stage

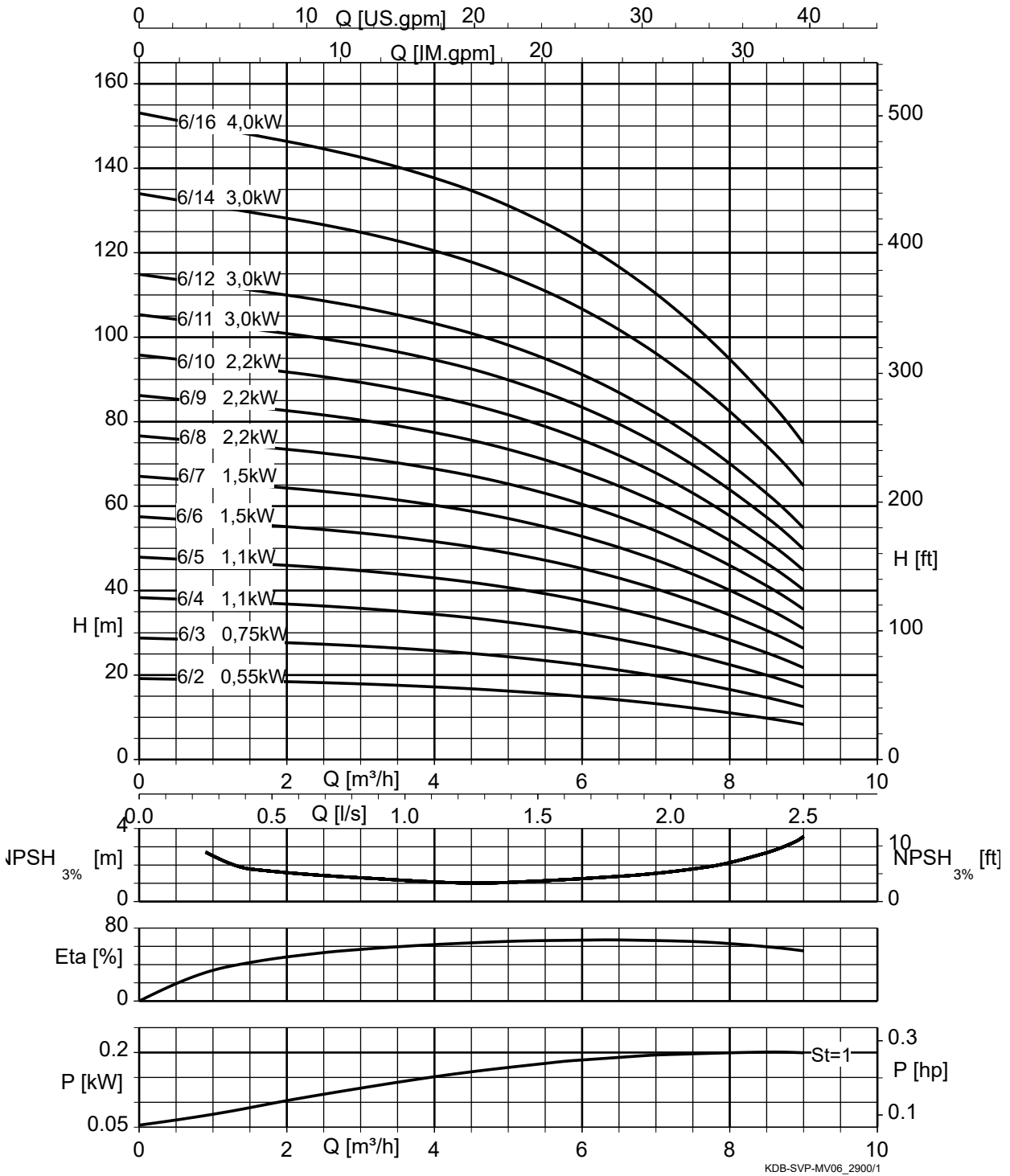
KSB Delta Basic SVP, Movitec 04, n = 2900 rpm



KDB-SVP-MV04_2900/1

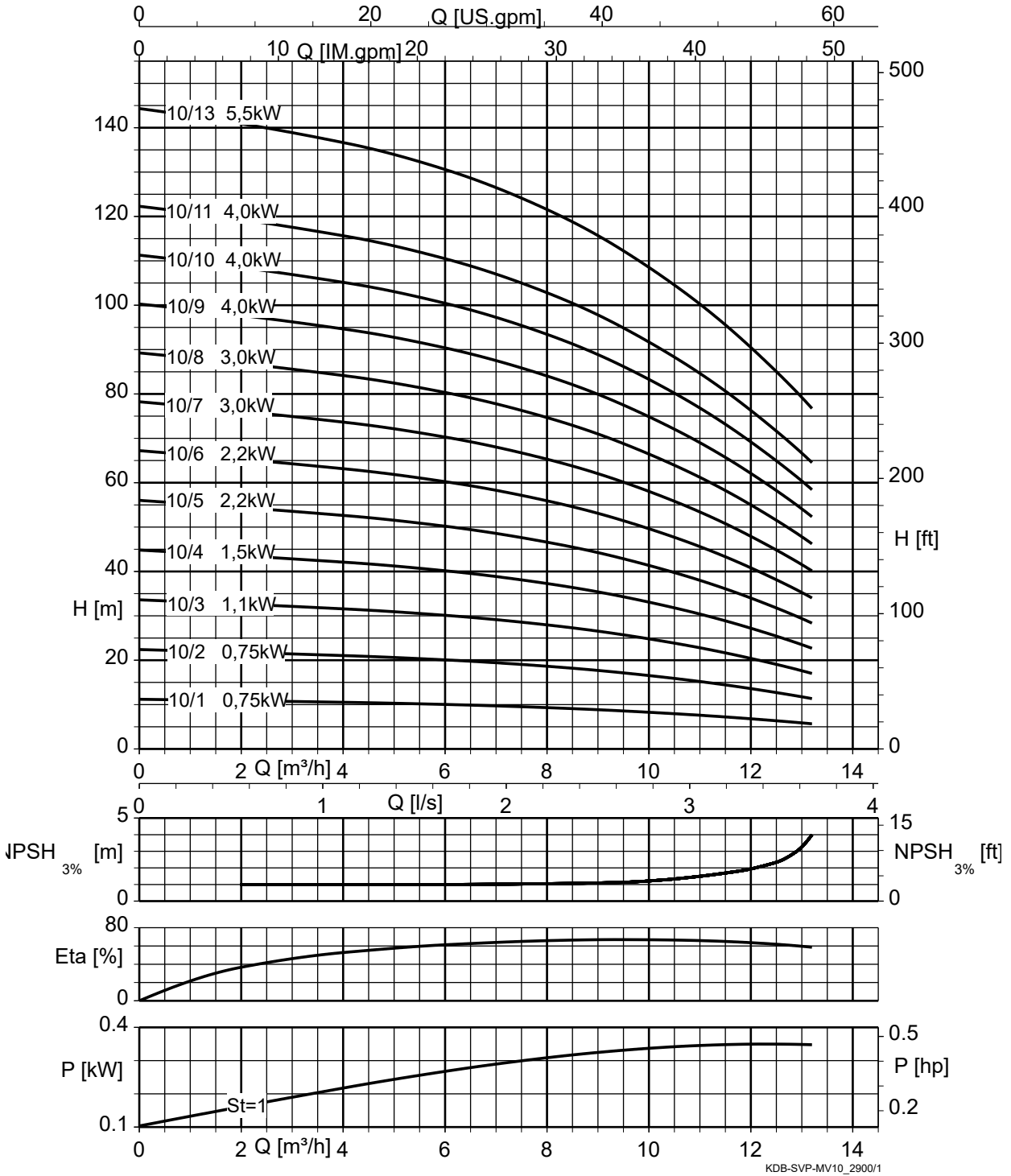
St = 1 | P per stage

KSB Delta Basic SVP, Movitec 06, n = 2900 rpm



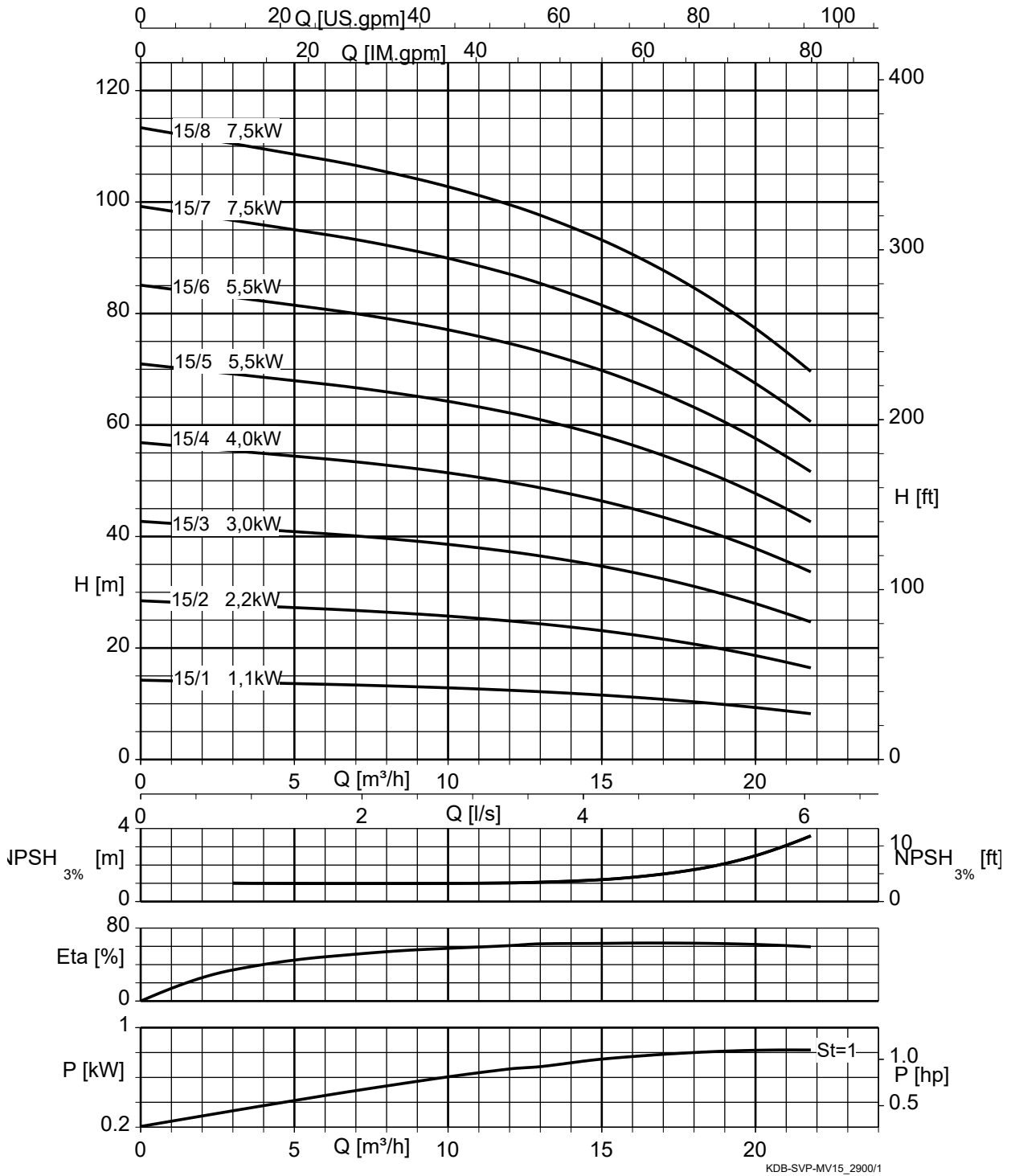
St = 1 | P per stage

KSB Delta Basic SVP, Movitec 10, n = 2900 rpm



St = 1 | P per stage

KSB Delta Basic SVP, Movitec 15, n = 2900 rpm



St = 1 | P per stage

Dimensions and connections

KSB Delta Basic MVP 2, Movitec 02 / 04 / 06 / 10 / 15

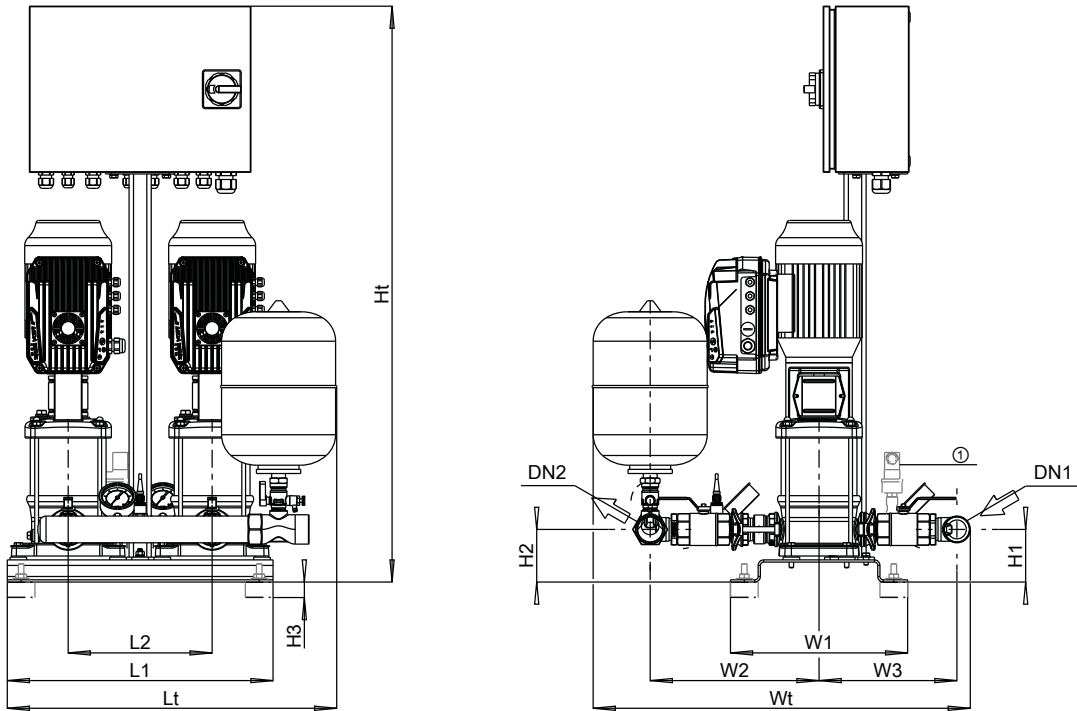


Fig. 2: Dimensions

①	Pressure switch for dry running protection
---	--

Dimensions [mm] and connections

Number of pumps	Movitec	Number of stages	DN1	DN2	L1	L2	Lt	H1	H2	H3	Ht	W1	W2	W3	Wt
2	02	02	G 1 1/2	G 1 1/2	480	260	724	95	95	28	1040	320	291	235	653
2	02	03	G 1 1/2	G 1 1/2	480	260	724	95	95	28	1040	320	291	235	653
2	02	04	G 1 1/2	G 1 1/2	480	260	724	95	95	28	1040	320	291	235	653
2	02	05	G 1 1/2	G 1 1/2	480	260	724	95	95	28	1040	320	291	235	653
2	02	06	G 1 1/2	G 1 1/2	480	260	724	95	95	28	1040	320	291	235	653
2	02	07	G 1 1/2	G 1 1/2	480	260	724	95	95	28	1040	320	291	235	653
2	02	08	G 1 1/2	G 1 1/2	480	260	724	95	95	28	1190	320	291	235	653
2	02	09	G 1 1/2	G 1 1/2	480	260	724	95	95	28	1190	320	291	235	653
2	02	10	G 1 1/2	G 1 1/2	480	260	724	95	95	28	1190	320	291	235	653
2	02	11	G 1 1/2	G 1 1/2	480	260	724	95	95	28	1190	320	291	235	653
2	02	12	G 1 1/2	G 1 1/2	480	260	724	95	95	28	1190	320	291	235	653
2	02	14	G 1 1/2	G 1 1/2	480	260	724	95	95	28	1340	320	291	235	653
2	02	18	G 1 1/2	G 1 1/2	480	260	724	95	95	28	1340	320	291	235	653
2	02	20	G 1 1/2	G 1 1/2	480	260	724	95	95	28	1590	320	291	235	653
2	04	02	G 1 1/2	G 1 1/2	480	260	724	95	95	28	1040	320	291	235	653
2	04	03	G 1 1/2	G 1 1/2	480	260	724	95	95	28	1040	320	291	235	653
2	04	04	G 1 1/2	G 1 1/2	480	260	724	95	95	28	1040	320	291	235	653
2	04	05	G 1 1/2	G 1 1/2	480	260	724	95	95	28	1040	320	291	235	653
2	04	06	G 1 1/2	G 1 1/2	480	260	724	95	95	28	1040	320	291	235	653
2	04	07	G 1 1/2	G 1 1/2	480	260	724	95	95	28	1190	320	291	235	653
2	04	08	G 1 1/2	G 1 1/2	480	260	724	95	95	28	1190	320	291	235	653
2	04	09	G 1 1/2	G 1 1/2	480	260	724	95	95	28	1190	320	291	235	653
2	04	10	G 1 1/2	G 1 1/2	480	260	724	95	95	28	1190	320	291	235	653
2	04	11	G 1 1/2	G 1 1/2	480	260	724	95	95	28	1340	320	291	235	653
2	04	12	G 1 1/2	G 1 1/2	480	260	724	95	95	28	1340	320	291	235	653
2	06	02	G 1 1/2	G 1 1/2	480	260	724	95	95	28	1040	320	305	249	681

1983.531/06-EN

Number of pumps	Movitec	Number of stages	DN1	DN2	L1	L2	Lt	H1	H2	H3	Ht	W1	W2	W3	Wt
2	06	03	G 1 1/2	G 1 1/2	480	260	724	95	95	28	1040	320	305	249	681
2	06	04	G 1 1/2	G 1 1/2	480	260	724	95	95	28	1040	320	305	249	681
2	06	05	G 1 1/2	G 1 1/2	480	260	724	95	95	28	1040	320	305	249	681
2	06	06	G 1 1/2	G 1 1/2	480	260	724	95	95	28	1190	320	305	249	681
2	06	07	G 1 1/2	G 1 1/2	480	260	724	95	95	28	1190	320	305	249	681
2	06	08	G 1 1/2	G 1 1/2	480	260	724	95	95	28	1190	320	305	249	681
2	06	09	G 1 1/2	G 1 1/2	480	260	724	95	95	28	1190	320	305	249	681
2	10	01	G 2	G 2	640	340	739	125	125	28	1040	360	373	297	803
2	10	02	G 2	G 2	640	340	739	125	125	28	1040	360	373	297	803
2	10	03	G 2	G 2	640	340	739	125	125	28	1190	360	373	297	803
2	10	04	G 2	G 2	640	340	739	125	125	28	1190	360	373	297	803
2	10	05	G 2	G 2	640	340	739	125	125	28	1190	360	373	297	803
2	15	01	DN 65	DN 65	640	340	715	125	125	28	1040	360	408	332	936
2	15	02	DN 65	DN 65	640	340	715	125	125	28	1190	360	408	332	936

KSB Delta Basic MVP 3, Movitec 02 / 04 / 06 / 10 / 15

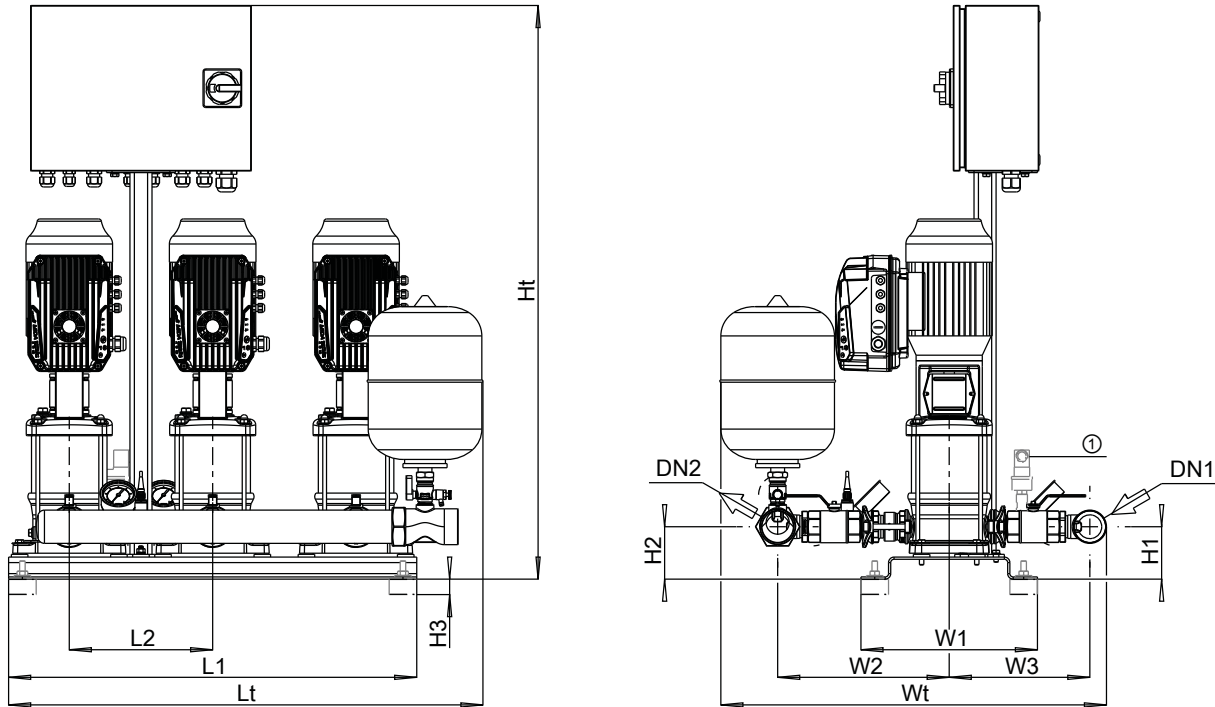


Fig. 3: Dimensions

① Pressure switch for dry running protection

Dimensions [mm] and connections

Number of pumps	Movitec	Number of stages	DN1	DN2	L1	L2	Lt	H1	H2	H3	Ht	W1	W2	W3	Wt
3	02	02	G 1 1/2	G 1 1/2	740	260	984	95	95	28	1040	320	291	235	653
3	02	03	G 1 1/2	G 1 1/2	740	260	984	95	95	28	1040	320	291	235	653
3	02	04	G 1 1/2	G 1 1/2	740	260	984	95	95	28	1040	320	291	235	653
3	02	05	G 1 1/2	G 1 1/2	740	260	984	95	95	28	1040	320	291	235	653
3	02	06	G 1 1/2	G 1 1/2	740	260	984	95	95	28	1040	320	291	235	653
3	02	07	G 1 1/2	G 1 1/2	740	260	984	95	95	28	1040	320	291	235	653
3	02	08	G 1 1/2	G 1 1/2	740	260	984	95	95	28	1190	320	291	235	653
3	02	09	G 1 1/2	G 1 1/2	740	260	984	95	95	28	1190	320	291	235	653
3	02	10	G 1 1/2	G 1 1/2	740	260	984	95	95	28	1190	320	291	235	653
3	02	11	G 1 1/2	G 1 1/2	740	260	984	95	95	28	1190	320	291	235	653
3	02	12	G 1 1/2	G 1 1/2	740	260	984	95	95	28	1190	320	291	235	653
3	02	14	G 1 1/2	G 1 1/2	740	260	984	95	95	28	1340	320	291	235	653
3	02	16	G 1 1/2	G 1 1/2	740	260	984	95	95	28	1340	320	291	235	653
3	02	18	G 1 1/2	G 1 1/2	740	260	984	95	95	28	1340	320	291	235	653
3	02	20	G 1 1/2	G 1 1/2	740	260	984	95	95	28	1590	320	291	235	653
3	04	02	G 1 1/2	G 1 1/2	740	260	984	95	95	28	1040	320	291	235	653
3	04	03	G 1 1/2	G 1 1/2	740	260	984	95	95	28	1040	320	291	235	653
3	04	04	G 1 1/2	G 1 1/2	740	260	984	95	95	28	1040	320	291	235	653
3	04	05	G 1 1/2	G 1 1/2	740	260	984	95	95	28	1040	320	291	235	653
3	04	06	G 1 1/2	G 1 1/2	740	260	984	95	95	28	1040	320	291	235	653
3	04	07	G 1 1/2	G 1 1/2	740	260	984	95	95	28	1190	320	291	235	653
3	04	08	G 1 1/2	G 1 1/2	740	260	984	95	95	28	1190	320	291	235	653
3	04	09	G 1 1/2	G 1 1/2	740	260	984	95	95	28	1190	320	291	235	653
3	04	10	G 1 1/2	G 1 1/2	740	260	984	95	95	28	1190	320	291	235	653
3	04	11	G 1 1/2	G 1 1/2	740	260	984	95	95	28	1340	320	291	235	653
3	04	12	G 1 1/2	G 1 1/2	740	260	984	95	95	28	1340	320	291	235	653
3	06	02	G 2	G 2	740	260	989	95	95	28	1040	320	311	255	699
3	06	03	G 2	G 2	740	260	989	95	95	28	1040	320	311	255	699

1983.531/06-EN

Number of pumps	Movitec	Number of stages	DN1	DN2	L1	L2	Lt	H1	H2	H3	Ht	W1	W2	W3	Wt
3	06	04	G 2	G 2	740	260	989	95	95	28	1040	320	311	255	699
3	06	05	G 2	G 2	740	260	989	95	95	28	1040	320	311	255	699
3	06	06	G 2	G 2	740	260	989	95	95	28	1190	320	311	255	699
3	06	07	G 2	G 2	740	260	989	95	95	28	1190	320	311	255	699
3	06	08	G 2	G 2	740	260	989	95	95	28	1190	320	311	255	699
3	06	09	G 2	G 2	740	260	989	95	95	28	1190	320	311	255	699
3	10	01	G 2	G 2	980	340	1079	125	125	28	1040	360	373	297	803
3	10	02	G 2	G 2	980	340	1079	125	125	28	1040	360	373	297	803
3	10	03	G 2	G 2	980	340	1079	125	125	28	1190	360	373	297	803
3	10	04	G 2	G 2	980	340	1079	125	125	28	1190	360	373	297	803
3	10	05	G 2	G 2	980	340	1079	125	125	28	1190	360	373	297	803
3	15	01	DN 65	DN 65	980	340	1055	125	125	28	1040	360	408	332	936
3	15	02	DN 65	DN 65	980	340	1055	125	125	28	1190	360	408	332	936

KSB Delta Basic SVP 2, Movitec 02 / 04 / 06 / 10 / 15

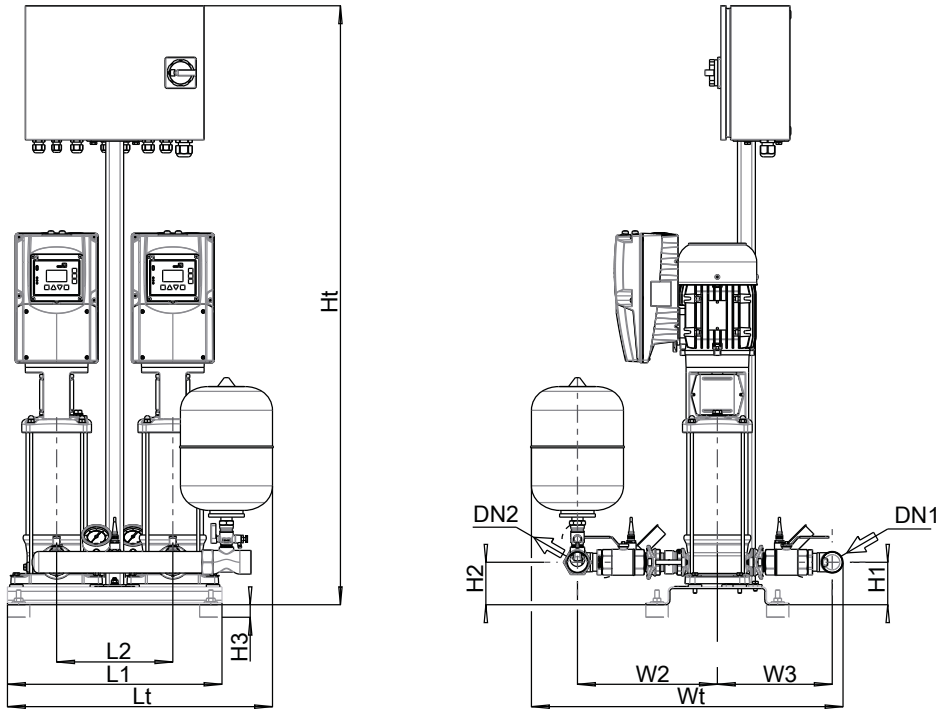


Fig. 4: Dimensions

Dimensions [mm] and connections

Number of pumps	Movitec	Number of stages	DN1	DN2	L1	L2	Lt	H1	H2	H3	Ht	W1	W2	W3	Wt
2	02	02	G 1 1/2	G 1 1/2	480	260	724	95	95	28	1040	320	291	235	653
2	02	03	G 1 1/2	G 1 1/2	480	260	724	95	95	28	1040	320	291	235	653
2	02	04	G 1 1/2	G 1 1/2	480	260	724	95	95	28	1040	320	291	235	653
2	02	05	G 1 1/2	G 1 1/2	480	260	724	95	95	28	1040	320	291	235	653
2	02	06	G 1 1/2	G 1 1/2	480	260	724	95	95	28	1040	320	291	235	653
2	02	07	G 1 1/2	G 1 1/2	480	260	724	95	95	28	1040	320	291	235	653
2	02	08	G 1 1/2	G 1 1/2	480	260	724	95	95	28	1190	320	291	235	653
2	02	09	G 1 1/2	G 1 1/2	480	260	724	95	95	28	1190	320	291	235	653
2	02	10	G 1 1/2	G 1 1/2	480	260	724	95	95	28	1190	320	291	235	653
2	02	11	G 1 1/2	G 1 1/2	480	260	724	95	95	28	1190	320	291	235	653
2	02	12	G 1 1/2	G 1 1/2	480	260	724	95	95	28	1190	320	291	235	653
2	02	14	G 1 1/2	G 1 1/2	480	260	724	95	95	28	1340	320	291	235	653
2	02	16	G 1 1/2	G 1 1/2	480	260	724	95	95	28	1340	320	291	235	653
2	02	18	G 1 1/2	G 1 1/2	480	260	724	95	95	28	1340	320	291	235	653
2	02	20	G 1 1/2	G 1 1/2	480	260	724	95	95	28	1590	320	291	235	653
2	04	02	G 1 1/2	G 1 1/2	480	260	724	95	95	28	1040	320	291	235	653
2	04	03	G 1 1/2	G 1 1/2	480	260	724	95	95	28	1040	320	291	235	653
2	04	04	G 1 1/2	G 1 1/2	480	260	724	95	95	28	1040	320	291	235	653
2	04	05	G 1 1/2	G 1 1/2	480	260	724	95	95	28	1040	320	291	235	653
2	04	06	G 1 1/2	G 1 1/2	480	260	724	95	95	28	1040	320	291	235	653
2	04	07	G 1 1/2	G 1 1/2	480	260	724	95	95	28	1190	320	291	235	653
2	04	08	G 1 1/2	G 1 1/2	480	260	724	95	95	28	1190	320	291	235	653
2	04	09	G 1 1/2	G 1 1/2	480	260	724	95	95	28	1190	320	291	235	653
2	04	10	G 1 1/2	G 1 1/2	480	260	724	95	95	28	1190	320	291	235	653
2	04	11	G 1 1/2	G 1 1/2	480	260	724	95	95	28	1340	320	291	235	653
2	04	12	G 1 1/2	G 1 1/2	480	260	724	95	95	28	1340	320	291	235	653
2	04	14	G 1 1/2	G 1 1/2	480	260	724	95	95	28	1340	320	291	235	653
2	04	16	G 1 1/2	G 1 1/2	480	260	724	95	95	28	1340	320	291	235	653
2	06	02	G 1 1/2	G 1 1/2	480	260	724	95	95	28	1040	320	305	249	681

1983.531/06-EN

Number of pumps	Movitec	Number of stages	DN1	DN2	L1	L2	Lt	H1	H2	H3	Ht	W1	W2	W3	Wt
2	06	03	G 1 1/2	G 1 1/2	480	260	724	95	95	28	1040	320	305	249	681
2	06	04	G 1 1/2	G 1 1/2	480	260	724	95	95	28	1040	320	305	249	681
2	06	05	G 1 1/2	G 1 1/2	480	260	724	95	95	28	1040	320	305	249	681
2	06	06	G 1 1/2	G 1 1/2	480	260	724	95	95	28	1190	320	305	249	681
2	06	07	G 1 1/2	G 1 1/2	480	260	724	95	95	28	1190	320	305	249	681
2	06	08	G 1 1/2	G 1 1/2	480	260	724	95	95	28	1190	320	305	249	681
2	06	09	G 1 1/2	G 1 1/2	480	260	724	95	95	28	1190	320	305	249	681
2	06	10	G 1 1/2	G 1 1/2	480	260	724	95	95	28	1340	320	305	249	681
2	06	11	G 1 1/2	G 1 1/2	480	260	724	95	95	28	1340	320	305	249	681
2	06	12	G 1 1/2	G 1 1/2	480	260	724	95	95	28	1340	320	305	249	681
2	06	14	G 1 1/2	G 1 1/2	480	260	724	95	95	28	1340	320	305	249	681
2	06	16	G 1 1/2	G 1 1/2	480	260	724	95	95	28	1590	320	305	249	681
2	10	01	G 2	G 2	640	340	739	125	125	28	1040	360	373	297	803
2	10	02	G 2	G 2	640	340	739	125	125	28	1040	360	373	297	803
2	10	03	G 2	G 2	640	340	739	125	125	28	1190	360	373	297	803
2	10	04	G 2	G 2	640	340	739	125	125	28	1190	360	373	297	803
2	10	05	G 2	G 2	640	340	739	125	125	28	1190	360	373	297	803
2	10	06	G 2	G 2	640	340	739	125	125	28	1190	360	373	297	803
2	10	07	G 2	G 2	640	340	739	125	125	28	1340	360	373	297	803
2	10	08	G 2	G 2	640	340	739	125	125	28	1340	360	373	297	803
2	10	09	G 2	G 2	640	340	739	125	125	28	1340	360	373	297	803
2	10	10	G 2	G 2	640	340	739	125	125	28	1590	360	373	297	803
2	10	11	G 2	G 2	640	340	739	125	125	28	1590	360	373	297	803
2	10	13	G 2	G 2	640	340	739	125	125	28	1590	360	373	297	803
2	15	01	DN 65	DN 65	640	340	715	125	125	28	1040	360	408	332	936
2	15	02	DN 65	DN 65	640	340	715	125	125	28	1190	360	408	332	936
2	15	03	DN 65	DN 65	640	340	715	125	125	28	1190	360	408	332	936
2	15	04	DN 65	DN 65	640	340	715	125	125	28	1190	360	408	332	936
2	15	05	DN 65	DN 65	640	340	715	125	125	28	1590	360	408	332	936
2	15	06	DN 65	DN 65	640	340	715	125	125	28	1590	360	408	332	936
2	15	07	DN 65	DN 65	640	340	715	125	125	28	1590	360	408	332	936
2	15	08	DN 65	DN 65	640	340	715	125	125	28	1590	360	408	332	936

KSB Delta Basic SVP 3, Movitec 02 / 04 / 06 / 10 / 15

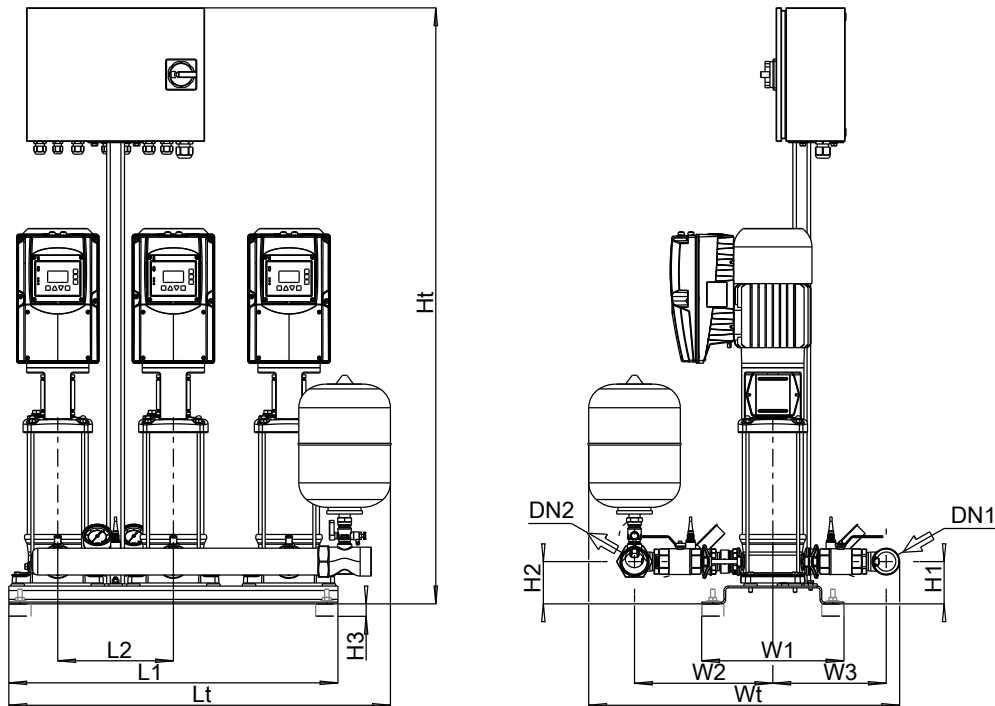


Fig. 5: Dimensions

Dimensions [mm] and connections

Number of pumps	Movitec	Number of stages	DN1	DN2	L1	L2	Lt	H1	H2	H3	Ht	W1	W2	W3	Wt
3	02	02	G 1 1/2	G 1 1/2	740	260	984	95	95	28	1040	320	291	235	653
3	02	03	G 1 1/2	G 1 1/2	740	260	984	95	95	28	1040	320	291	235	653
3	02	04	G 1 1/2	G 1 1/2	740	260	984	95	95	28	1040	320	291	235	653
3	02	05	G 1 1/2	G 1 1/2	740	260	984	95	95	28	1040	320	291	235	653
3	02	06	G 1 1/2	G 1 1/2	740	260	984	95	95	28	1040	320	291	235	653
3	02	07	G 1 1/2	G 1 1/2	740	260	984	95	95	28	1040	320	291	235	653
3	02	08	G 1 1/2	G 1 1/2	740	260	984	95	95	28	1190	320	291	235	653
3	02	09	G 1 1/2	G 1 1/2	740	260	984	95	95	28	1190	320	291	235	653
3	02	10	G 1 1/2	G 1 1/2	740	260	984	95	95	28	1190	320	291	235	653
3	02	11	G 1 1/2	G 1 1/2	740	260	984	95	95	28	1190	320	291	235	653
3	02	12	G 1 1/2	G 1 1/2	740	260	984	95	95	28	1190	320	291	235	653
3	02	14	G 1 1/2	G 1 1/2	740	260	984	95	95	28	1340	320	291	235	653
3	02	16	G 1 1/2	G 1 1/2	740	260	984	95	95	28	1340	320	291	235	653
3	02	18	G 1 1/2	G 1 1/2	740	260	984	95	95	28	1340	320	291	235	653
3	02	20	G 1 1/2	G 1 1/2	740	260	984	95	95	28	1590	320	291	235	653
3	04	02	G 1 1/2	G 1 1/2	740	260	984	95	95	28	1040	320	291	235	653
3	04	03	G 1 1/2	G 1 1/2	740	260	984	95	95	28	1040	320	291	235	653
3	04	04	G 1 1/2	G 1 1/2	740	260	984	95	95	28	1040	320	291	235	653
3	04	05	G 1 1/2	G 1 1/2	740	260	984	95	95	28	1040	320	291	235	653
3	04	06	G 1 1/2	G 1 1/2	740	260	984	95	95	28	1040	320	291	235	653
3	04	07	G 1 1/2	G 1 1/2	740	260	984	95	95	28	1190	320	291	235	653
3	04	08	G 1 1/2	G 1 1/2	740	260	984	95	95	28	1190	320	291	235	653
3	04	09	G 1 1/2	G 1 1/2	740	260	984	95	95	28	1190	320	291	235	653
3	04	10	G 1 1/2	G 1 1/2	740	260	984	95	95	28	1190	320	291	235	653
3	04	11	G 1 1/2	G 1 1/2	740	260	984	95	95	28	1340	320	291	235	653
3	04	12	G 1 1/2	G 1 1/2	740	260	984	95	95	28	1340	320	291	235	653
3	04	14	G 1 1/2	G 1 1/2	740	260	984	95	95	28	1340	320	291	235	653
3	04	16	G 1 1/2	G 1 1/2	740	260	984	95	95	28	1340	320	291	235	653
3	06	02	G 2	G 2	740	260	989	95	95	28	1040	320	311	255	699

1983.531/06-EN

Number of pumps	Movitec	Number of stages	DN1	DN2	L1	L2	Lt	H1	H2	H3	Ht	W1	W2	W3	Wt
3	06	03	G 2	G 2	740	260	989	95	95	28	1040	320	311	255	699
3	06	04	G 2	G 2	740	260	989	95	95	28	1040	320	311	255	699
3	06	05	G 2	G 2	740	260	989	95	95	28	1040	320	311	255	699
3	06	06	G 2	G 2	740	260	989	95	95	28	1190	320	311	255	699
3	06	07	G 2	G 2	740	260	989	95	95	28	1190	320	311	255	699
3	06	08	G 2	G 2	740	260	989	95	95	28	1190	320	311	255	699
3	06	09	G 2	G 2	740	260	989	95	95	28	1190	320	311	255	699
3	06	10	G 2	G 2	740	260	989	95	95	28	1340	320	311	255	699
3	06	11	G 2	G 2	740	260	989	95	95	28	1340	320	311	255	699
3	06	12	G 2	G 2	740	260	989	95	95	28	1340	320	311	255	699
3	06	14	G 2	G 2	740	260	989	95	95	28	1340	320	311	255	699
3	06	16	G 2	G 2	740	260	989	95	95	28	1590	320	311	255	699
3	10	01	G 2	G 2	980	340	1079	125	125	28	1040	360	373	297	803
3	10	02	G 2	G 2	980	340	1079	125	125	28	1040	360	373	297	803
3	10	03	G 2	G 2	980	340	1079	125	125	28	1190	360	373	297	803
3	10	04	G 2	G 2	980	340	1079	125	125	28	1190	360	373	297	803
3	10	05	G 2	G 2	980	340	1079	125	125	28	1190	360	373	297	803
3	10	06	G 2	G 2	980	340	1079	125	125	28	1190	360	373	297	803
3	10	07	G 2	G 2	980	340	1079	125	125	28	1340	360	373	297	803
3	10	08	G 2	G 2	980	340	1079	125	125	28	1340	360	373	297	803
3	10	09	G 2	G 2	980	340	1079	125	125	28	1340	360	373	297	803
3	10	10	G 2	G 2	980	340	1079	125	125	28	1590	360	373	297	803
3	10	11	G 2	G 2	980	340	1079	125	125	28	1590	360	373	297	803
3	10	13	G 2	G 2	980	340	1079	125	125	28	1590	360	373	297	803
3	15	01	DN 65	DN 65	980	340	1055	125	125	28	1040	360	408	332	936
3	15	02	DN 65	DN 65	980	340	1055	125	125	28	1190	360	408	332	936
3	15	03	DN 65	DN 65	980	340	1055	125	125	28	1190	360	408	332	936
3	15	04	DN 65	DN 65	980	340	1055	125	125	28	1190	360	408	332	936
3	15	05	DN 65	DN 65	980	340	1055	125	125	28	1590	360	408	332	936
3	15	06	DN 65	DN 65	980	340	1055	125	125	28	1590	360	408	332	936
3	15	07	DN 65	DN 65	980	340	1055	125	125	28	1590	360	408	332	936
3	15	08	DN 65	DN 65	980	340	1055	125	125	28	1590	360	408	332	936

KSB Delta Basic SVP 4, Movitec 02 / 04 / 06

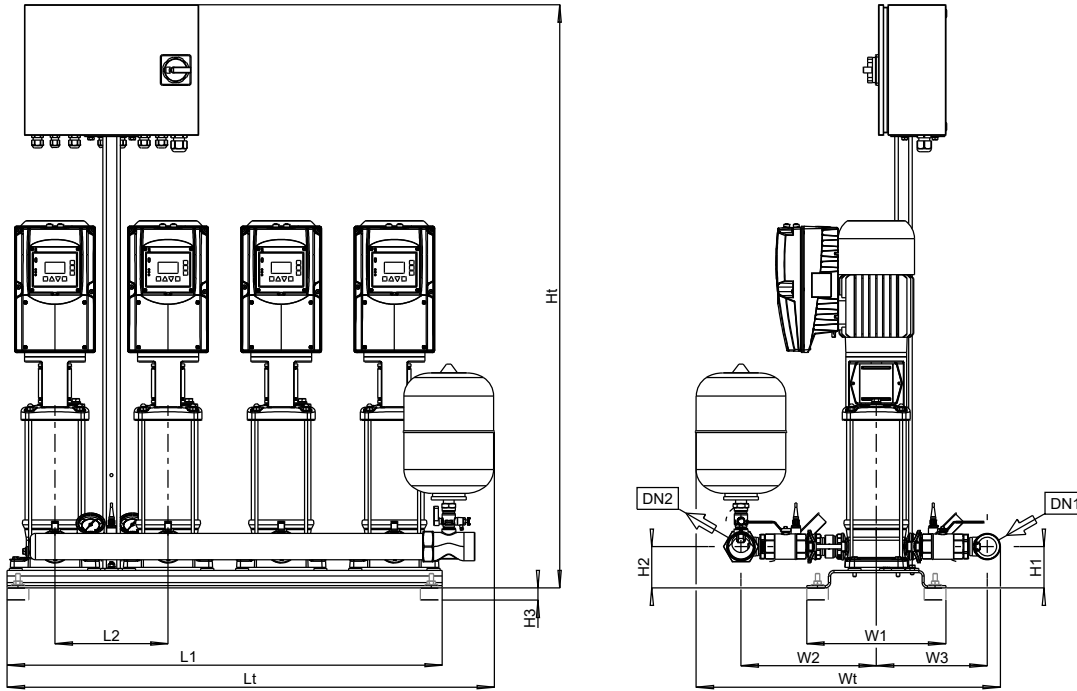


Fig. 6: Dimensions

Dimensions [mm] and connections

Number of pumps	Movitec	Number of stages	DN1	DN2	L1	L2	Lt	H1	H2	H3	Ht	W1	W2	W3	Wt
4	02	02	G 1 1/2	G 1 1/2	1000	260	1244	95	95	28	1040	320	291	235	653
4	02	03	G 1 1/2	G 1 1/2	1000	260	1244	95	95	28	1040	320	291	235	653
4	02	04	G 1 1/2	G 1 1/2	1000	260	1244	95	95	28	1040	320	291	235	653
4	02	05	G 1 1/2	G 1 1/2	1000	260	1244	95	95	28	1040	320	291	235	653
4	02	06	G 1 1/2	G 1 1/2	1000	260	1244	95	95	28	1040	320	291	235	653
4	02	07	G 1 1/2	G 1 1/2	1000	260	1244	95	95	28	1040	320	291	235	653
4	02	08	G 1 1/2	G 1 1/2	1000	260	1244	95	95	28	1190	320	291	235	653
4	02	09	G 1 1/2	G 1 1/2	1000	260	1244	95	95	28	1190	320	291	235	653
4	02	10	G 1 1/2	G 1 1/2	1000	260	1244	95	95	28	1190	320	291	235	653
4	02	11	G 1 1/2	G 1 1/2	1000	260	1244	95	95	28	1190	320	291	235	653
4	02	12	G 1 1/2	G 1 1/2	1000	260	1244	95	95	28	1190	320	291	235	653
4	02	14	G 1 1/2	G 1 1/2	1000	260	1244	95	95	28	1340	320	291	235	653
4	02	16	G 1 1/2	G 1 1/2	1000	260	1244	95	95	28	1340	320	291	235	653
4	02	18	G 1 1/2	G 1 1/2	1000	260	1244	95	95	28	1340	320	291	235	653
4	02	20	G 1 1/2	G 1 1/2	1000	260	1244	95	95	28	1590	320	291	235	653
4	04	02	G 1 1/2	G 1 1/2	1000	260	1244	95	95	28	1040	320	291	235	653
4	04	03	G 1 1/2	G 1 1/2	1000	260	1244	95	95	28	1040	320	291	235	653
4	04	04	G 1 1/2	G 1 1/2	1000	260	1244	95	95	28	1040	320	291	235	653
4	04	05	G 1 1/2	G 1 1/2	1000	260	1244	95	95	28	1040	320	291	235	653
4	04	06	G 1 1/2	G 1 1/2	1000	260	1244	95	95	28	1040	320	291	235	653
4	04	07	G 1 1/2	G 1 1/2	1000	260	1244	95	95	28	1190	320	291	235	653
4	04	08	G 1 1/2	G 1 1/2	1000	260	1244	95	95	28	1190	320	291	235	653
4	04	09	G 1 1/2	G 1 1/2	1000	260	1244	95	95	28	1190	320	291	235	653
4	04	10	G 1 1/2	G 1 1/2	1000	260	1244	95	95	28	1190	320	291	235	653
4	04	11	G 1 1/2	G 1 1/2	1000	260	1244	95	95	28	1340	320	291	235	653
4	04	12	G 1 1/2	G 1 1/2	1000	260	1244	95	95	28	1340	320	291	235	653
4	04	14	G 1 1/2	G 1 1/2	1000	260	1244	95	95	28	1340	320	291	235	653
4	04	16	G 1 1/2	G 1 1/2	1000	260	1244	95	95	28	1340	320	291	235	653
4	06	02	G 2	G 2	1000	260	1249	95	95	28	1040	320	311	255	699

1983.531/06-EN

Number of pumps	Movitec	Number of stages	DN1	DN2	L1	L2	Lt	H1	H2	H3	Ht	W1	W2	W3	Wt
4	06	03	G 2	G 2	1000	260	1249	95	95	28	1040	320	311	255	699
4	06	04	G 2	G 2	1000	260	1249	95	95	28	1040	320	311	255	699
4	06	05	G 2	G 2	1000	260	1249	95	95	28	1040	320	311	255	699
4	06	06	G 2	G 2	1000	260	1249	95	95	28	1190	320	311	255	699
4	06	07	G 2	G 2	1000	260	1249	95	95	28	1190	320	311	255	699
4	06	08	G 2	G 2	1000	260	1249	95	95	28	1190	320	311	255	699
4	06	09	G 2	G 2	1000	260	1249	95	95	28	1190	320	311	255	699
4	06	10	G 2	G 2	1000	260	1249	95	95	28	1340	320	311	255	699
4	06	11	G 2	G 2	1000	260	1249	95	95	28	1340	320	311	255	699
4	06	12	G 2	G 2	1000	260	1249	95	95	28	1340	320	311	255	699
4	06	14	G 2	G 2	1000	260	1249	95	95	28	1340	320	311	255	699
4	06	16	G 2	G 2	1000	260	1249	95	95	28	1590	320	311	255	699

KSB Delta Basic SVP 4, Movitec 10 / 15

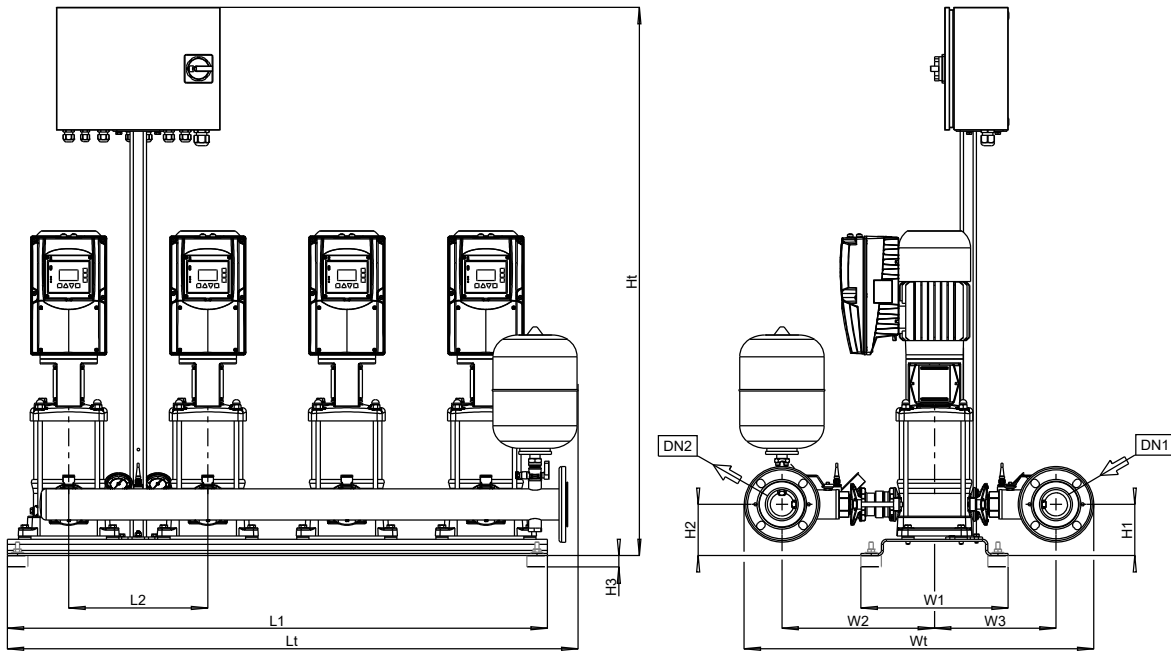


Fig. 7: Dimensions

Dimensions [mm] and connections

Number of pumps	Movitec	Number of stages	DN1	DN2	L1	L2	Lt	H1	H2	H3	Ht	W1	W2	W3	Wt
4	10	01	DN 65	DN 65	1320	340	1395	125	125	28	1040	360	381	305	882
4	10	02	DN 65	DN 65	1320	340	1395	125	125	28	1040	360	381	305	882
4	10	03	DN 65	DN 65	1320	340	1395	125	125	28	1190	360	381	305	882
4	10	04	DN 65	DN 65	1320	340	1395	125	125	28	1190	360	381	305	882
4	10	05	DN 65	DN 65	1320	340	1395	125	125	28	1190	360	381	305	882
4	10	06	DN 65	DN 65	1320	340	1395	125	125	28	1190	360	381	305	882
4	10	07	DN 65	DN 65	1320	340	1395	125	125	28	1340	360	381	305	882
4	10	08	DN 65	DN 65	1320	340	1395	125	125	28	1340	360	381	305	882
4	10	09	DN 65	DN 65	1320	340	1395	125	125	28	1340	360	381	305	882
4	10	10	DN 65	DN 65	1320	340	1395	125	125	28	1590	360	381	305	882
4	10	11	DN 65	DN 65	1320	340	1395	125	125	28	1590	360	381	305	882
4	10	13	DN 65	DN 65	1320	340	1395	125	125	28	1590	360	381	305	882
4	15	01	DN 100	DN 100	1320	340	1395	125	125	28	1040	360	427	351	998
4	15	02	DN 100	DN 100	1320	340	1395	125	125	28	1190	360	427	351	998
4	15	03	DN 100	DN 100	1320	340	1395	125	125	28	1190	360	427	351	998
4	15	04	DN 100	DN 100	1320	340	1395	125	125	28	1190	360	427	351	998
4	15	05	DN 100	DN 100	1320	340	1395	125	125	28	1590	360	427	351	998
4	15	06	DN 100	DN 100	1320	340	1395	125	125	28	1590	360	427	351	998
4	15	07	DN 100	DN 100	1320	340	1395	125	125	28	1590	360	427	351	998
4	15	08	DN 100	DN 100	1320	340	1395	125	125	28	1590	360	427	351	998

General assembly drawings/exploded views with list of components

KSB Delta Basic MVP

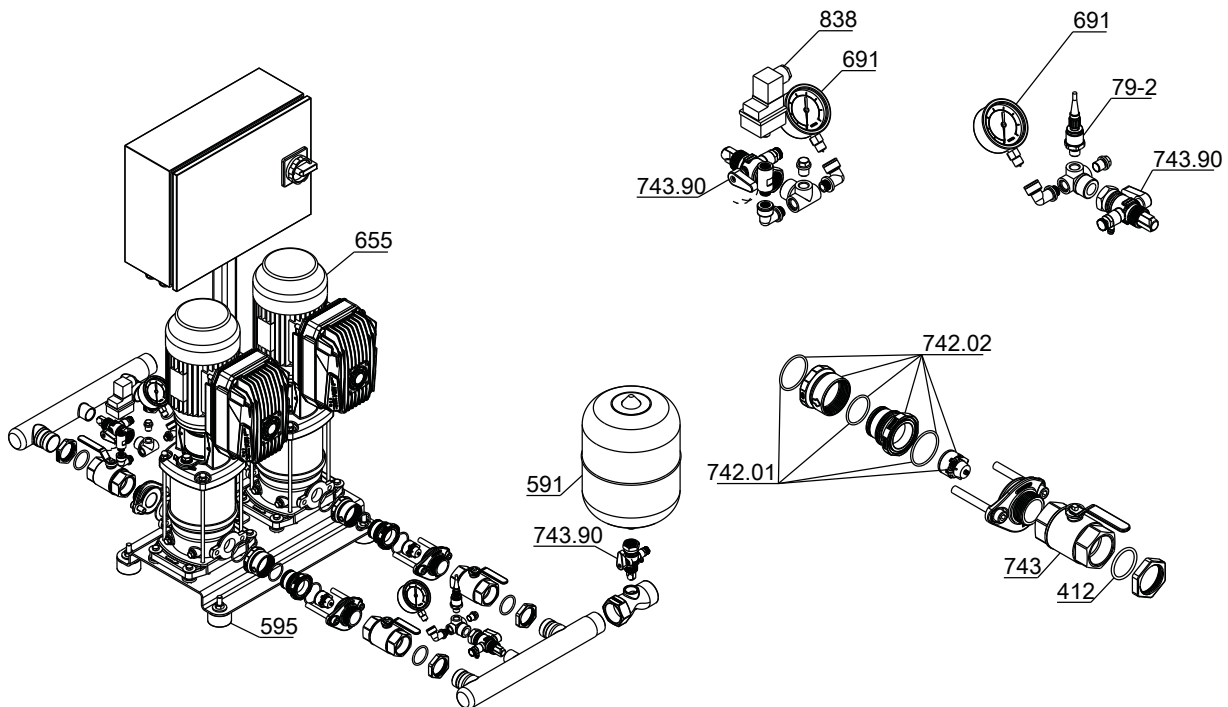


Fig. 8: KSB Delta Basic MVP

List of components

Part No.	Description	Part No.	Description
79-2	Measuring transducer	691	Pressure gauge
412	O-ring	742.01/.02	Lift check valve
591	Accumulator	743.90	Ball valve
595	Anti-vibration pad	838	Pressure switch for dry running protection
655	Pump		

The individual parts of the pump set are shown in the product literature of the pump set.

KSB Delta Basic SVP

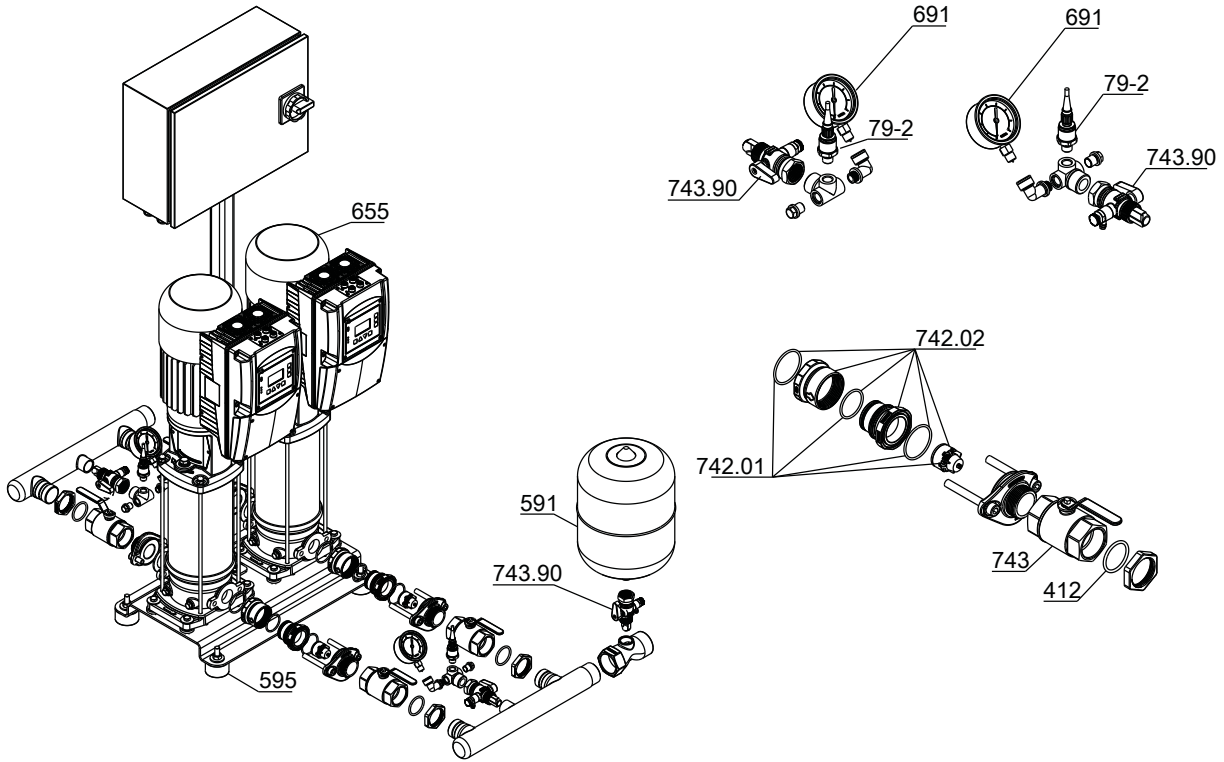


Fig. 9: KSB Delta Basic SVP

List of components

Part No.	Description	Part No.	Description
79-2	Measuring transducer	655	Pump
412	O-ring	691	Pressure gauge
591	Accumulator	742.01/.02	Lift check valve
595	Anti-vibration pad	743.90	Ball valve

The individual parts of the pump set are shown in the product literature of the pump set.

Accessories

See the separate type series booklet Accessories for Pressure Booster Systems 1954.5.

Glossary

IE3

Efficiency class to IEC 60034-30: 3 = Premium Efficiency
(IE = International Efficiency)

IE5

Efficiency class to IEC TS 60034-30-2:2016 = Ultra
Premium Efficiency (IE = International Efficiency)

Mat. No.

This identification number is composed of an 8-digit
numerical code that uniquely identifies a product
entered in SAP.



KSB SE & Co. KGaA
Johann-Klein-Straße 9 • 67227 Frankenthal (Germany)
Tel. +49 6233 86-0
www.ksb.com